

WORK SITE

FINAL PLANS

JANUARY 2022

VILLAGE OF BRONXVILLE

PONDFIELD ROAD & MIDLAND AVENUE /
PONDFIELD ROAD & GRAMATAN AVENUE
INTERSECTIONS AND PEDESTRIAN IMPROVEMENTS

VILLAGE OF BRONXVILLE
WESTCHESTER COUNTY, NEW YORK

THE LATEST REVISIONS OF THE STANDARD SHEETS MAINTAINED BY THE DEPARTMENT, WHICH ARE CURRENT ON THE DATE OF ADVERTISEMENT FOR BIDS, SHALL BE CONSIDERED TO BE IN EFFECT. ALL PAY ITEMS AND WORK CONTAINED IN THE CONTRACT AND ANY ADDITIONAL PAY ITEMS AND WORK ENCOUNTERED DURING THE COURSE OF THE CONTRACT SHALL BE SUBJECT TO THE APPLICABLE STANDARD SHEET(S) UNLESS OTHERWISE SPECIFIED IN THE CONTRACT DOCUMENTS.

ALL WORK CONTEMPLATED UNDER THIS CONTRACT IS TO BE COVERED BY AND IN CONFORMITY WITH THE STANDARD SPECIFICATIONS (AS CUSTOMARY) REFERENCED IN THE CONTRACT PROJECT "PROPOSAL" EXCEPT AS MODIFIED BY THESE PLANS OR BY CHANGES SET FORTH IN THE CONTRACT PROJECT "PROPOSAL."

NYS DOT STANDARD SHEETS:

209-03	619-50
209-05	619-51
402-01	
608-01	
609-01	
609-02	
609-03	
611-01	
619-04	
619-10	
619-11	
619-12	

DWG NO.		DRAWING NAME
1	CVR	TITLE SHEET
2	EOQ	ESTIMATE OF QUANTITIES
3	LEG	LEGEND AND LIST OF ABBREVIATIONS
4	GNN	GENERAL NOTES
PONDFIELD ROAD / MIDLAND AVENUE INTERSECTION		
5	MID 1	GENERAL PLAN
6	MID 2	TRAFFIC SIGNAL PLAN
7	MID 3	TRAFFIC SIGNAL TABLES
PONDFIELD ROAD / GRAMATAN AVENUE INTERSECTION		
8	GRA 1	GENERAL PLAN
9	GRA 2	TRAFFIC SIGNAL PLAN
10	GRA 3	TRAFFIC SIGNAL TABLES
COMMON DETAILS		
11	DTL 1	CURB DETAILS
12	DTL 2	DRAINAGE UTILITY DETAILS

CONTRACTOR'S NAME _____

AWARD DATE _____

COMPLETION DATE _____

FINAL ACCEPTANCE DATE _____

APPROVED BY: _____
VILLAGE OF BRONXVILLE

DESIGNED BY: _____
PROJECT MANAGER, WSP



MIDLAND AVENUE AND
PONDFIELD ROAD INTERSECTION

GRAMATAN AVENUE AND
PONDFIELD ROAD INTERSECTION

LOCATION MAP

AFFIX SEAL:
ON: _____

ALTERED BY:
ON: _____

NOT FOR
CONSTRUCTION

AS-BUILT REVISIONS
DESCRIPTION OF ALTERATIONS:

PONDFIELD ROAD & MIDLAND AVENUE INTERSECTION AND PEDESTRIAN IMPROVEMENTS
PONDFIELD ROAD & GRAMATAN AVENUE INTERSECTION AND PEDESTRIAN IMPROVEMENTS
VILLAGE OF BRONXVILLE
WESTCHESTER COUNTY, NEW YORK

ALL DIMENSIONS IN FT UNLESS OTHERWISE NOTED

CONTRACT NUMBER

COVER

DRAWING NO. CVR
SHEET NO. 1 of 12

IT IS A VIOLATION OF LAW FOR ANY PERSON, UNLESS THEY ARE ACTING UNDER THE DIRECTION OF A LICENSED PROFESSIONAL ENGINEER, ARCHITECT, LANDSCAPE ARCHITECT, OR LAND SURVEYOR, TO ALTER AN ITEM IN ANY WAY. IF AN ITEM BEARING THE STAMP OF A LICENSED PROFESSIONAL IS ALTERED, THE ALTERING ENGINEER, ARCHITECT, LANDSCAPE ARCHITECT, OR LAND SURVEYOR SHALL STAMP THE DOCUMENT AND INCLUDE THE NOTATION "ALTERED BY" FOLLOWED BY THEIR SIGNATURE, THE DATE OF SUCH ALTERATION, AND A SPECIFIC DESCRIPTION OF THE ALTERATION.

MIDLAND AVENUE

ITEM NUMBER	DESCRIPTION	UNIT	QUANTITY
206.02	TRENCH AND CULVERT EXCAVATION	CY	32.0
206.03	CONDUIT EXCAVATION AND BACKFILL INCLUDING SURFACE RESTORATION	LF	289.0
206.05	TEST PIT EXCAVATION	EA	1.0
402.128103	HMA TOP COURSE	TON	25.3
490.40	MISCELLANEOUS COLD MILLING OF PORTLAND CEMENT CONCRETE	SY	204.7
603.6003	REINFORCED CONCRETE PIPE CLASS III, 18 INCH DIAMETER	LF	16.0
604.070101	ALTER EXISTING DRAINAGE STRUCTURE	EA	1.0
604.301873	RECTANGULAR DRAINAGE STRUCTURE TYPE R FOR CAST IRON F3 FRAME	LF	16.0
608.01050405	4" THICK CURB RAMP	SF	404.0
608.02010015	UNCLASSIFIED EXCAVATION AND DISPOSAL UNDER CURB RAMPS	CY	78.5
608.02020015	OPTIONAL TYPE SUBBASE COURSE UNDER CURB RAMPS	CY	78.5
645.5102	GROUND-MOUNTED SIGN PANELS LESS THAN OR EQUAL TO30 SF, WITH Z-BARS	EA	2.0
645.61	TRAFFIC SIGNAL POLE (FLUTED SHAPE) - MAST ARM WITH FLUTEDARM,	EA	2.0
645.81	TYPE A SIGN POSTS	EA	2.0
655.0806	CAST FRAME F3, UNMOUNTABLE CURB BOXCU3 & PARALLEL BARGRATE 8 PCB	EA	1.0
655.1202	MANHOLE FRAME AND COVER	EA	1.0
657.1802001	PAINTING OF NEW TRAFFIC SIGNAL POLES	EA	2.0
680.08110008	INSTALL INTERNET SERVICE FOR TRAFFIC SIGNAL - MODEM ONLY	EA	1.0
680.5001	POLE EXCAVATION AND CONCRETE FOUNDATION	CY	2.0
680.510501	PULLBOX-RECTANGULAR - 26 X 18 INCH, REINFORCED CONCRETE	EA	4.0
680.520106	CONDUIT, METAL STEEL, ZINC COATED, 2"	LF	16.0
680.54	INDUCTANCE LOOP INSTALLATION	LF	300.0
680.62172309	TRAFFIC SIGNAL POLE (FLUTED SHAPE) - MAST ARM WITH FLUTEDARM, 17 FT MOUNTING HEIGHT, 23 FOOT MAST ARM LENGTH	EA	2.0
680.68080309	PEDESTRIAN POLE - BRACKET MOUNT - PAINTED	EA	4.0
680.71	SHIELDED LEAD-IN WIRE	LF	140.0
680.72	INDUCTANCE LOOP WIRE	LF	900.0
680.730514	SIGNAL CABLE 5 CONDUCTORS, 14 AWG	LF	2,078.0
680.732014	SIGNAL CABLE 20 CONDUCTORS, 14 AWG	LF	100.0
680.78100108	MODIFY AND REMOVE TRAFFIC SIGNAL EQUIPMENT	LS	1.0
680.80310008	FURNISH AND INSTALL MICROCOMPUTER (MODEL 2070) COMPLETE WITH STRETCH-TYPE CABINET	EA	1.0
680.810101	TRAFFIC SIGNAL MODULE - 12 INCH, RED BALL, LED	EA	8.0
680.810103	TRAFFIC SIGNAL MODULE - 12 INCH, YELLOW BALL, LED	EA	8.0
680.810104	TRAFFIC SIGNAL MODULE - 12 INCH, YELLOW ARROW, LED	EA	1.0
680.810105	TRAFFIC SIGNAL MODULE - 12 INCH, GREEN BALL, LED	EA	8.0
680.810106	TRAFFIC SIGNAL MODULE - 12 INCH, GREEN ARROW, LED	EA	1.0
680.810107	TRAFFIC SIGNAL SECTION - TYPE I, 12 INCH	EA	24.0
680.8114	TRAFFIC SIGNAL BRACKET ASSEMBLY - 4 WAY	EA	2.0
680.81310209	ACCESSIBLE PEDESTRIAN SIGNAL (APS) WITHOUT POLE	EA	8.0
680.813107	PEDESTRIAN SIGNAL MODULE - 16 INCH BY 18 INCH BI-MODAL HAND/MAN LED	EA	8.0
680.813108	PEDESTRIAN SIGNAL SECTION, TYPE I - FOR 16 BY 18 INCH LED MODULE	EA	8.0
680.8141	PEDESTRIAN SIGNAL BRACKET MOUNT ASSEMBLY	EA	8.0
680.81500008	PEDESTRIAN BI-MODAL MAN/HAND & COUNTDOWN TIMER MODULE	EA	8.0
680.8204	OVERHEAD SIGN ASSEMBLY, TYPE D	EA	2.0
680.94997008	FURNISH AND INSTALL ELECTRICAL DISCONNECT GENERATOR SWITCH	LS	1.0
685.11	WHITE EPOXY REFLECTORIZED PAVEMENT STRIPES - 20 MILS	LF	882

GRAMATAN AVENUE

ITEM NO.	DESCRIPTION	UNIT	QUANTITY
203.02	UNCLASSIFIED EXCAVATION AND DISPOSAL	CY	33
206.03	CONDUIT EXCAVATION AND BACKFILL INCLUDING SURFACE RESTORATION	LF	284
304.11000008	SUBBASE	CY	36
402.128103	HMA TOP COURSE	TON	5
555.0105	CLASS A CONCRETE	CY	8.1
608.01050405	4" THICK CURB RAMP	SF	5.5
608.02010015	UNCLASSIFIED EXCAVATION AND DISPOSAL UNDER CURB RAMPS	CY	13.0
608.02020015	OPTIONAL TYPE SUBBASE COURSE UNDER CURB RAMPS	CY	13
609.0401	CAST-IN-PLACE CONCRETE CURB	LF	207
610.1402	TOPSOIL-ROADSIDE	CY	1
610.1601	TURF ESTABLISHMENT - ROADSIDE	SY	4
619.01	BASIC WORK ZONE TRAFFIC CONTROL	LS	1
619.080102	REMOVE PAVEMENT MARKING STRIPES, EPOXY PAINT	LF	373
627.50140008	SAWCUTTING	LF	207
B670.51350008	FURNISH AND INSTALL DECORATIVE STREET LIGHTING	EACH	2
680.5001	POLE EXCAVATION AND CONCRETE FOUNDATION	CY	5.0
680.510501	PULLBOX-RECTANGULAR, 26 X 18 INCH, REINFORCED CONCRETE	EACH	2
680.520106	CONDUIT, METAL STEEL, ZINC COATED, 2"	LF	284
680.54	INDUCTANCE LOOP INSTALLATION	LF	190
680.62172309	FLUTED TRAFFIC SIGNAL POLE - MAST ARM, 17 FEET MOUNTING HEIGHT, 23 FEET ARM LENGTH	EACH	2
680.6808	TRAFFIC SIGNAL POLE-BRACKET MOUNT 8 FEET MOUNTING HEIGHT	EACH	2
680.72	INDUCTANCE LOOP WIRE	LF	190
680.730214	SIGNAL CABLE 2 CONDUCTORS, 14 AWG	LF	284
680.730514	SIGNAL CABLE 5 CONDUCTORS, 14 AWG	LF	284
680.79010008	REMOVE TRAFFIC SIGNAL EQUIPMENT	LS	1
680.80324515	INSTALL MICROCOMPUTER CABINET	EACH	1
680.813107	PEDESTRIAN SIGNAL MODULE - 16 INCH BY 18 INCH BI-MODAL HAND/MAN LED	EACH	2
680.813108	PEDESTRIAN SIGNAL SECTION, TYPE I - FOR 16 INCH BY 18 INCHLED MODULE	EACH	2
680.8141	PEDESTRIAN SIGNAL BRACKET MOUNT ASSEMBLY	EACH	1
680.82201908	BREAKAWAY TRANSFORMER BASE (TRAFFIC)	EACH	2
680.810101	TRAFFIC SIGNAL MODULE - 12 INCH, RED BALL, LED	EACH	6
680.810103	TRAFFIC SIGNAL MODULE - 12 INCH, YELLOW BALL, LED	EACH	6
680.810104	TRAFFIC SIGNAL MODULE - 12 INCH, YELLOW ARROW, LED	EACH	1
680.810105	TRAFFIC SIGNAL MODULE - 12 INCH, GREEN BALL, LED	EACH	6
680.810106	TRAFFIC SIGNAL MODULE - 12 INCH GREEN ARROW, LED	EACH	1
680.810107	TRAFFIC SIGNAL SECTION - TYPE I, 12 INCH	EACH	20
680.8113	TRAFFIC SIGNAL BRACKET ASSEMBLY - 3 WAY	EACH	2
680.94997008	FURNISH AND INSTALL ELECTRICAL DISCONNECT GENERATOR TRANSFER SWITCH	EACH	1
685.11	WHITE EPOXY REFLECTORIZED PAVEMENT STRIPES - 20 MILS	LF	1176

AFFIX SEAL:
ON: _____

ALTERED BY:
ON: _____

NOT FOR CONSTRUCTION

AS-BUILT REVISIONS
DESCRIPTION OF ALTERATIONS:

PONDFIELD ROAD & MIDLAND AVENUE INTERSECTION AND PEDESTRIAN IMPROVEMENTS
PONDFIELD ROAD & GRAMATAN AVENUE INTERSECTION AND PEDESTRIAN IMPROVEMENTS
VILLAGE OF BRONXVILLE
WESTCHESTER COUNTY, NEW YORK

IT IS A VIOLATION OF LAW FOR ANY PERSON, UNLESS THEY ARE ACTING UNDER THE DIRECTION OF A LICENSED PROFESSIONAL ENGINEER, ARCHITECT, LANDSCAPE ARCHITECT, OR LAND SURVEYOR, TO ALTER AN ITEM IN ANY WAY. IF AN ITEM BEARING THE STAMP OF A LICENSED PROFESSIONAL IS ALTERED, THE ALTERING ENGINEER, ARCHITECT, LANDSCAPE ARCHITECT, OR LAND SURVEYOR SHALL STAMP THE DOCUMENT AND INCLUDE THE NOTATION "ALTERED BY" FOLLOWED BY THEIR SIGNATURE, THE DATE OF SUCH ALTERATION, AND A SPECIFIC DESCRIPTION OF THE ALTERATION.

ALL DIMENSIONS IN FT UNLESS OTHERWISE NOTED

ESTIMATE OF QUANTITIES

CONTRACT NUMBER

DRAWING NO. EQQ
SHEET NO. 2 OF 12



FILE NAME : DGN\$SPEC01234567890123456789012345678901234
DATE/TIME : DGN\$SYTIME0123456
USER : DGN\$USERNAME

DESIGN SUPERVISOR

JOB MANAGER

DESIGN

CHECK

DRAFTING

CHECK

PROJECT MANAGER

LEGEND

- ⊖

DISK

▣

CONCRETE/STONE BOUND

⊙

IRON PIPE

⊙

IRON ROD

⊙

DRILL HOLE

✕

X-CUT

●

AREA DRAIN

⊕

ROUND CATCH BASIN

■

CATCH BASIN

▤

DOUBLE CATCH BASIN

◁

OUTLET

⊖

DRAIN MANHOLE

⊖

UNKNOWN MANHOLE

⊖

SEWER MANHOLE

⊖

ELECTRIC MANHOLE

⊖

ELECTRIC METER

⊖

ELECTRIC BOX

⊖

ELECTRIC HANDHOLE

⊖

GAS MANHOLE
- ⬮

GAS VALVE
- ⊖

CABLE MANHOLE
- ⊖

CABLE BOX
- ⊖

TELEPHONE MANHOLE
- ⊖

TELEPHONE BOX
- ⊖

WATER MANHOLE
- ⬮

WATER GATE
- IRRIGATION CONTROL VALVE
- ⊖

FIRE HYDRANT
- ⊖

FIRE DEPARTMENT CONNECTION
- ⊖

UTILITY POLE WITH RISER
- ⊖

UTILITY POLE
- ⊖

UTILITY POLE WITH LIGHT
- ⊖

UTILITY POLE WITH LIGHT AND RISER
- ⊖

UTILITY POLE WITH LIGHT, RISER AND TRANSFORMER
- ⊖

UTILITY WITH RISER AND TRANSFORMER
- ⊖

DECIDUOUS TREE
- ⊖

CONIFER TREE
- ⊖

SHRUB
- SIGN (SINGLE POSTED)
- SIGN (DOUBLE POSTED)

⊖

TRAFFIC SIGNAL

◦

POST

⊖

MONITORING WELL

⊖

BORING

⊖

MAILBOX

⊖

LIGHT POLE

⊖

BOLLARD

⊖

HANDICAP PARKING

⊖

AIR CONDITIONER

⊖

FLAG POLE

⊖

BENCHMARK

⊖

TEST PIT

⊖

VALVE

⊖

VENT

ABUTTERS LOT LINE

PROPERTY LINE

EASEMENT

○—○—○—○—○—○—○—○

CHAIN LINK FENCE

—X—X—X—X—X—X—

WIRE FENCE

▣—▣—▣—▣—▣—▣—▣—▣

WOOD/VINYL FENCE

_____S

SEWER LINE

_____S&D

SEWER LINE

_____D

DRAIN LINE

WATER LINE

_____G

GAS LINE

_____E

UNDERGROUND ELECTRIC

_____C

UNDERGROUND CABLE

_____T

TELEPHONE LINE

_____OHW

OVERHEAD WIRES

STONE WALL

TREE LINE

.....52.....

INTERMEDIATE CONTOURS

.....50.....

INDEX CONTOURS

_____X

WETLAND LINE

AFFIX SEAL:
ON: _____

ALTERED BY:
ON: _____

NOT FOR
CONSTRUCTION

AS-BUILT REVISIONS
DESCRIPTION OF ALTERATIONS:

PONDFIELD ROAD & MIDLAND AVENUE INTERSECTION AND PEDESTRIAN IMPROVEMENTS

PONDFIELD ROAD & GRAMATAN AVENUE INTERSECTION AND PEDESTRIAN IMPROVEMENTS

VILLAGE OF BRONXVILLE

WESTCHESTER COUNTY, NEW YORK

IT IS A VIOLATION OF LAW FOR ANY PERSON, UNLESS THEY ARE ACTING UNDER THE DIRECTION OF A LICENSED PROFESSIONAL ENGINEER, ARCHITECT, LANDSCAPE ARCHITECT, OR LAND SURVEYOR, TO ALTER AN ITEM IN ANY WAY. IF AN ITEM BEARING THE STAMP OF A LICENSED PROFESSIONAL IS ALTERED, THE ALTERING ENGINEER, ARCHITECT, LANDSCAPE ARCHITECT, OR LAND SURVEYOR SHALL STAMP THE DOCUMENT AND INCLUDE THE NOTATION "ALTERED BY" FOLLOWED BY THEIR SIGNATURE, THE DATE OF SUCH ALTERATION, AND A SPECIFIC DESCRIPTION OF THE ALTERATION.

ALL DIMENSIONS IN FT UNLESS OTHERWISE NOTED

CONTRACT NUMBER

ESTIMATE OF QUANTITIES
LEGEND

DRAWING NO. EQQ
SHEET NO. 3 OF 12

wsp

500 Summit Lake Drive, 4th Floor, Suite 450
Valhalla, NY 10595
(914) 747-1120
www.wsp.com

GENERAL NOTES:

- DESIGN SPECIFICATIONS: NYSDOT HIGHWAY DESIGN SPECIFICATIONS WITH ALL PROVISIONS IN EFFECT AS OF THE CONTRACT LETTING DATE.
- CONSTRUCTION AND MATERIALS SPECIFICATIONS: STANDARD SPECIFICATIONS, CONSTRUCTION AND MATERIALS, NEW YORK STATE DEPARTMENT OF TRANSPORTATION, OFFICE OF ENGINEERING, DATED JANUARY 1, 2019, WITH CURRENT ADDITIONS AND MODIFICATIONS AS OF THE LETTING DATE.
- DETAILS ON THE DRAWINGS LABELED AS "NOT TO SCALE" ARE INTENTIONALLY DRAWN NOT TO SCALE FOR VISUAL CLARITY. ALL OTHER DETAILS FOR WHICH NO SCALE IS SHOWN ARE DRAWN PROPORTIONAL AND ARE FULLY DIMENSIONED.
- ALL SHOP DRAWINGS SUBMITTED FOR THIS PROJECT SHALL BE IN US CUSTOMARY UNITS AND BASED ON FIELD MEASUREMENTS.
- THE CONTRACTOR'S ATTENTION IS DIRECTED TO SUBSECTION 107-08, PROTECTION AND RESTORATION OF PROPERTY AND LANDSCAPE. THE FOLLOWING SHALL APPLY, ON THIS CONTRACT ONE OR MORE EXISTING BUILDINGS ARE LOCATED CLOSE TO THE SITE OF WORK. EXCAVATION, DEMOLITION, AND ANY OTHER CONSTRUCTION OPERATION IN THE VICINITY SHALL BE CONDUCTED IN A MANNER WHICH WILL NOT DAMAGE OR DISTRESS THE BUILDINGS. ANY DAMAGE CAUSED BY OR RELATED TO THE CONTRACTOR'S OPERATIONS SHALL BE REPAIRED AT NO COST TO THE CITY.

UTILITY NOTES:

- ALL KNOWN PUBLIC AND PRIVATE UTILITY LINES WITHIN OR ADJACENT TO THE SITE OF THE WORK ARE SHOWN IN THEIR EXISTING APPROXIMATE LOCATIONS ON THE CONTRACT PLANS. THE CONTRACTOR IS CAUTIONED THAT THESE LOCATIONS ARE NOT GUARANTEED, NOR IS THERE A GUARANTEE THAT ALL SUCH LINES IN EXISTENCE HAVE BEEN SHOWN ON THE PLANS.
- SHOULD UTILITIES BE ENCOUNTERED DURING CONSTRUCTION WHICH INTERFERES WITH THE WORK AND FOR WHICH PROVISIONS ARE NOT MADE ON THE PLANS, THE CONTRACTOR SHALL IMMEDIATELY STOP WORKING IN THE AFFECTED AREA AND NOTIFY THE ENGINEER OF THE EXISTENCE OF THESE UTILITIES AND OF THE EXTENT OF CONFLICT WITH THE WORK. THE ENGINEER SHALL THEN MAKE ARRANGEMENTS WITH THE OWNING UTILITY IN ORDER TO ALLOW THE CONTRACTOR TO PROGRESS HIS WORK.
- THE CONTRACTOR SHALL CONDUCT HIS OPERATIONS AS TO PREVENT DAMAGE TO SUCH FACILITIES. HE SHALL MAKE SUCH EXPLORATIONS AS MAY BE NECESSARY TO DETERMINE THE DIMENSIONS AND LOCATIONS OF LINES THAT MAY BE SUBJECT TO DAMAGE, CALL BEFORE YOU DIG, DRILL OR BLAST, NOTIFICATION TO THE VARIOUS OWNERS OF FACILITIES SHALL BE IN ACCORDANCE WITH NEW YORK STATE INDUSTRIAL CODE 753 (EFFECTIVE FEBRUARY 5, 1997).
- THE ACCURACY INDICATED FOR THE LOCATIONS OF UNDERGROUND UTILITIES SHOWN ON THESE PLANS ARE DEFINED AS FOLLOWS:

QUALITY LEVEL C - RECORD INFORMATION PROVIDED BY UTILITY OWNERS WAS PLOTTED ON THE CONTRACT PLANS. DEPTHS WERE NOT FIELD VERIFIED. PHYSICAL SURFACE FEATURES LIKE MANHOLES, VALVE BOXES AND HYDRANTS HAVE BEEN FIELD LOCATED.

THIS INFORMATION DOES NOT RELIEVE THE CONTRACTOR OF HIS OBLIGATIONS UNDER SECTIONS 660 THROUGH 680 OF THE STANDARD SPECIFICATIONS, NOR DOES IT RELIEVE THE UTILITY OWNERS OF THEIR OBLIGATION TO ACCURATELY LOCATE THEIR FACILITIES.
- THE CONTRACTOR SHALL SATISFY HIMSELF AS TO THE EXACT LOCATION OF UTILITY LINES AND PROTECT AND SUPPORT IN A SUITABLE MANNER AT HIS OWN EXPENSE ALL UNDERGROUND UTILITIES ENCOUNTERED IN HIS EXCAVATIOND AND TRENCHING OPERATIONS. THE CONTRACTOR SHALL MAKE GOOD ON ANY DAMEGE TO THOSE UTILITIES CAUSED BY HIS OPERATIONS. IF THE NATURE OF THE DAMAGE IS SUCH AS TO ENDANGER THE SATISFACTORY OPERATIONS OF THE UTILITIES AND THE NECESSARY REPAIRS ARE NOT IMMEDIATELY MADE BY THE CONTRACTOR, THE WORK MAY BE DONE BY THE RESPECTIVE OWNING COMPANIES AND THE COST THEREOF CHARGE AGAINST THE CONTRACTOR.
- THE CONTRACTOR SHALL COORDINATE WITH THE VARIOUS UTILITY OWNERS AS TO SPECIFIC REQUIREMENTSAND/OR RESTRICTIONS WHEN PERFORMING WORK ADJACENT TO THE UTILITY LINES AND SERVICES.

SITE WORK:

- AREAS BEYOND THE WORK LIMITS SHOWN IN THE PLANS DISTURBED FOR ANY REASON, BY THE CONTRACTOR AND HIS EMPLOYEES, SHALL BE RESTORED TO THE SATISFACTION OF THE ENGINEER AT THE CONTRACTOR'S EXPENSE.
- ALL BIDDERS SHOULD INSPECT THE PROJECT SITE PRIOR TO SUBMITTING BIDS TO VERIFY THE FIELD CONDITIONS WHICH MAY BE ENCOUNTERED AND THE NATURE OF THE WORK TO BE DONE UNDER THIS CONTRACT, NO COMPENSATION WILL BE ALLOWED TO THE BIDDER FOR FAILURE TO INCLUDE ALL LABOR, MATERIALS AND EQUIPMENT COSTS NECESSARY TO COMPLETE THE WORK.

WORK ZONE TRAFFIC CONTROL NOTES:

- MAINTENANCE AND PROTECTION OF TRAFFIC SCHEMES SHALL BE PROVIDED IN ACCORDANCE WITH SECTION 619 OF THE STANDARD SPECIFICATIONS, THE MANUAL OF UNIFORM TRAFFIC CONTROL DEVICES (MUTCD), WORK ZONE TRAFFIC CONTROL STANDARD SHEETS AND ANY PROVISIONS CONTAINED IN THE PLANS AND/OR PROPOSAL OF THIS CONTRACT.
- THE CONTRACTOR SHALL BE RESPONSIBLE FOR ALL MAINTENANCE AND PROTECTION OF TRAFFIC. MAINTENANCE OF TRAFFIC SCHEMES SHALL BE IN ACCORDANCE WITH THE PLANS, THE MUTCD AND AS APPROVED OR DIRECTED BY THE ENGINEER. TRAFFIC SCHEMES SHOWN ON THE PLANS OR IN THE MUTCD ARE TO BE CONSIDERED MINIMUM REQUIREMENTS. THE ENGINEER MAY ORDER ADDITIONAL SIGNS, FLAGGERS, CONES, REFLECTORIZATION ETC., IF HE DEEMS IT NECESSARY AT NO ADDITIONAL COST TO THE COUNTY. PAYMENT FOR ALL SUCH WORK SHALL BE INCLUDED IN THE ITEMS FOR WORK ZONE TRAFFIC CONTROL AS APPROPRIATE.
- THE CONTRACTOR MAY SUBMIT REVISIONS TO THESE PLANS AT NO ADDITIONAL COST TO THE VILLAGE FOR APPROVAL BY THE ENGINEER.
- THE CONTRACTOR MUST NOTIFY THE ENGINEER AND THE VILLAGE OF BRONXVILLE OF ALL DETOURS, PROPOSED STREET CLOSINGS, OR ANY WORK THAT MIGHT AFFECT THE MOBILITY OR ACCESS OF THE FIRE OR POLICE DEPARTMENT 72 HOURS IN ADVANCE OF THEIR IMPLEMENTATION. IN ADDITION, THE CONTRACTOR SHALL ENSURE THAT HYDRANTS AND ALARM BOXES ARE KEPT CLEAR AND AVAILABLE.
- ALONG ANY DETOUR ROUTES THAT THE CONTRACTOR PROPOSES, THE CONTRACTOR'S RESPONSIBILITY IS LIMITED TO THE PLACEMENT, MAINTENANCE AND REMOVAL OF DETOUR SIGNS AND DEVICES AND A DAILY PATROL TO MAKE SURE THEY ARE IN GOOD CONDITION. WHEN THE DETOUR IS NOT IN EFFECT THE CONTRACTOR SHALL IMMEDIATELY MOVE, REMOVE OR TEMPORARILY COVER ALL DETOUR SIGNS, TO REFLECT ACTUAL CONDITIONS. THIS SHALL BE PAID FOR UNDER ITEM 619.01.
- THE CONTRACTOR'S ATTENTION IS DIRECTED TO CHAPTER 6F, SECTION 6F.02 OF THE MUTCD WHICH REQUIRES THAT WITH THE EXCEPTION OF THE RAILROAD ADVANCE WARNING SIGN, WARNING SIGNS USED IN CONJUNCTION WITH WORK ZONE ACTIVITIES SHOULD HAVE ORANGE BACKGROUNDS.
- THE CONTRACTOR SHALL SCHEDULE HIS OPERATIONS TO MINIMIZE THE INTERRUPTION OF PEDESTRIAN TRAFFIC. WALKWAYS ON BOTH SIDES OF THE ROADWAY SHALL REMAIN OPEN AND PASSABLE AT ALL TIMES. PEDESTRIAN SAFETY AND PROPERTY ACCESS MUST BE MAINTAINED AT ALL TIMES DURING CONSTRUCTION TO THE SATISFACTION OF THE ENGINEER. IF A SIDEWALK DOES NOT PROVIDE SUFFICIENT WIDTH FOR PEDESTRIANS OR DOES NOT MAINTAIN A SAFE DISTANCE FROM CONSTRUCTION OPERATIONS, A SIDEWALK DETOUR OR DIVERSION MAY BE INSTALLED WITH APPROVAL OF THE ENGINEER ACCORDING TO NYSDOT STANDARD SHEET 619-50 AND PAID FOR UNDER ITEM 619.01.

GENERAL TRAFFIC SIGNAL NOTES

- ALL HARDWARE SHALL BE HOT DIPPED GALVANIZED UNLESS OTHERWISE NOTED. ALL BOLTS, NUTS AND WASHERS EXCEPTING ANCHOR BOLTS AND NUTS SHALL BE STAINLESS STEEL.
- ANCHOR BASE POLES SHALL NOT BE INSTALLED UNTIL 7 DAYS AFTER CONCRETE FOUNDATION HAS BEEN POURED. SIGNAL HEADS SHALL NOT BE HUNG UNTIL 28 DAYS AFTER THE CONCRETE HAS BEEN POURED.
- EXCAVATION AND RESTORAION REQUIREMENTS
 - FOUNDATION EXCAVATIONS ARE TO BE FILLED WITH CONCRETE THE DAY THEY ARE DUG TO AVOID HOLES LEFT OPEN OVERNIGHT. FOUNDATION INSTALLATION SHALL BE DONE IN ACCORDANCE WITH SECTION 680-3.10 OF THE SPECIFICATIONS. ONLY BACK FILLING WITH CONCRETE WILL BE PERMITTED.
 - SHOULD ANY EXCAVATION DUE TO INSTALLATION OR REMOVAL OF PULLBOXES, JACKING PITS, CONDUIT, POLES, CONTROLLERS, ETC. BE LEFT OPEN AT THE END OF THE WORKING DAY, THE CONTRACTOR SHALL PROVIDE PROTECTION MEETING THE REQUIREMENTS OF SECTION 107-05F.
- CONDUIT AND PULLBOX NOTES
 - WHENEVER METALLIC CONDUIT, MEETING THE REQUIREMENTS OF SUBJECTION 723-20 METAL STEEL CONDUIT, ZINC COATED, IS SPECIFIED, IT SHALL BE CLASS 1 - RIGID METAL STEEL CONDUIT.
 - NON-METALLIC CONDUIT SHALL BE TERMINATED WITH BELL FITTINGS WHICH ARE GROUTED FLUSH WITH THE INSIDE OF THE PULLBOX WALL. NON-METALLIC CONDUITS ARE NOT TO PROTRUDE INTO THE PULLBOX.
 - METALLIC CONDUITS ARE TO PROTRUDE INTO THE PULLBOX SUFFICIENTLY TO SECURE GROUNDING BUSHINGS BUT NOT MORE THAN 3 INCHES. CONDUIT ENDINGS SHALL BE THREADED TO ACCEPT THREADED BONDING BUSHINGS.
 - A NO. 2 CRUSHED STONE OF GRAVEL BASE WILL NOT BE REQUIRED AS SPECIFIED ON STANDARD SHEET "PULLBOX, CONDUIT AND GROUND ROD INSTALLATION DETAILS.
 - ALL CONDUIT RUNS CONTAINING SERVICE CABLE SHALL HAVE A MINIMUM COVER OF 30 INCHES.
 - THREADED INSULATING CONDING BUSHING SHALL BE INSTALLED AT EVERY CONDUIT ENTRANCE TO A PULLBOX. THREADED, SET SCREW TYPE BUSHINGS AND COUPLINGS ARE NOT ACCEPTABLE. NO CABLES SHALL BEINSTALLED INCONDUITS PRIOR TO THE INSTALLATION OF THE INSULATED BONDING BUSHINGS.
- THE CONDULET BETWEEN THE MICROCABINET AND THE SIGNAL POLE SHALL BE 4 INCHES IN DIAMETER. POLES REPLACED (IF BORROWED) AND NEW POLES ORDERED SHALL BE FABRICATED FOR 4 INCH WEATHER HEADS. POLE MANUFACTURER INSTALLED AND REINFORCED CABINET WIRING ACCESS COUPLING SHALL BE INCLUDED ON ALL TRAFFIC SIGNAL POLES.
- GROUNDING REQUIREMENTS
 - ALL METALLIC CONDUIT SHALL BE BONDED WITH GROUNDING BUSHINGS AND CONNECTED TOGETHER WITH #6 SOLID BARE COPPER WITRE. ONLY #6 SOLID BARE COPPER WIRE SHALL BE USED FOR GROUNDING.
 - ALL NON-METALLIC CONDUITS AND CONDUIT RUNS HAVING BOTH METALLIC AND NON-METALLIC CONDUIT BETWEEN PULLBOXES OR EQUIPMENT FOUNDATION SHALL BE PROVIDED WITH A NO. 6 SOLID BARE COPPER DRAIN WIRE.
 - 1 INCH CONDUITS PLACED FOR DETECTION INSTALLATIONS SHALL NOT BE GROUNDED.
 - IF THE NON-METALLIC CONDUIT DRAIN WIRE CANNOT BE GROUNDED AT BOTH ENDS TO A STEEL CONDUIT, WHICH IS AT LEAST 10 FEET LONG, A GROUND ROD SHALL BE PROVIDED TO TERMINATE THE DRAIN WIRE.
 - ALL SIGNAL POLES AND PEDESTRIAN POLES SHALL BE GROUNDED BY MEANS OF A GROUND ROD DRIVEN IN THE NEAREST PULLBOX.
- TRAFFIC SIGNAL HEAD REQUIREMENTS
 - LOCK NUTS SHALL BE MADE OF GALVANIZED, MALLEABLE, IRON.
 - OPEN TUNNEL VISORS SHALL BE PROVIDED ON ALL SIGNAL SECTIONS.
 - A MINIMUM CLEARANCE OF 17'-0" SHALL BE MAINTAINED FROM THE BOTTOM OF SINGAL HEADS TO THE PAVEMENT.
 - ALL READ BALL, YELLOW BALL, GREEN BALL, RED ARROW, YELLOW ARROW AND GREEN ARROW INDICATIONS SHALL BE LED SIGNAL SECTIONS.
 - THE CONTRACTOR SHALL ENSURE THAT THE CONNECTIONS BETWEEN THE SIGNAL HEAD BRACKETS AND THE SIGNAL HEADS ARE WATER TIGHT.
- UPON REMOVAL OF ANY POLE MOUNTED CABINETS, THE CONTRACTOR SHALL ENCLOSE THE CONDUIT OUTLET BY MEANS OF A HOT DIPPED CALVANIZED CAP.


GENERAL TRAFFIC SIGNAL NOTES - CONT.

- CABLE
 - THE SPLICE BETWEEN THE LOOP LEAD IN WIRE AND THE LOOP WIRE SHALL HAVE SOLDERED CONNECTION SRATHER THAN SLEEVE CONNECTORS. THE INDIVIDUAL CONDUCTORS SHALL BE PROTECTED IN ACCORDANCE WITH SECTION 680-3.16 OF THE STANDARD SPECIFICATIONS. THE SPLICE SHALL BE COVERED WITH TWO LAYERS OF SELF ADHERING TAPE. A SPLICE CASE UTILIZING A TWO PART POLYURETHANE SEALING COMPOUND SHALL BE PLACED OVER THE ENTIRE SPLICE.
 - UNDER NO CIRCUMSTANCE SHALL INDIVIDUAL SIGNAL CABLE CONDUCTORS, OF A MULTICONDUCTOR CABLE, BE PERMITTED IN TRAFFIC SIGNAL POLES OR POSTS WITHOUT THE PROTECTION OF THE CABLE OUTER INSULATION.
- SERVICE CONNECTIONS - THE CONTRACTOR SHALL INSTALL FUSE LINKS CONTAINING REPLACEABLE CARTRIDGE TYPE FUSES, APPROVED BY THE UTILITY COMPANY SUPPLYING SERVICE, TO THE SERVICE END OF THE THE CONTRACTOR INSTALLED CABLE. THE UTILITY COMPANY WILL ATTACH THEIR SERVICE CABLE TO THE FREE END OF THE FUSE LINKS. THE FUSE LINKS SHALL BE RATED FOR THE SERVICE CABLE SPECIFIED IN THE DESIGN. THE INSTALLATION OF THE FUSE LINKS WILL PROVIDE A FUSED SERVICE CABLE WITHIN THE SERVICE POLE. THE CONTRACTOR SHALL NOT BE RESPONSIBLE FOR INSTALLING A SEPARATE WEATHERHEAD AND CONDUIT FOR THE SERVICE CABLE WHEN FUSE LINKS ARE INSTALLED. THE CONTRACTOR MAY FURNISH TWO SINGLE CONDUCTOR CABLES, INSTEAD OF A SINGLE DUAL CONDUCTOR CABLE WITH WHITE AND BLACK CONDUCTORS. ON CABLE SHALL BE BLACK AND ON WHITE FOR THE NEUTRAL CONNECTION.
- PEDESTRIAN SIGNAL HEADS SHALL BE PROVIDED WITH A FIVE POSITION TERMINAL BLOCK.
- TRAFFIC SIGNAL REQUIREMENTS
 - THE MICROCABINET SHALL BE MOUNTED 2.5 FEET ABOVE FINISHED GRADE.
 - CONCRETE WORK PADS SHALL BE INSTALLED IN FRONT OF THE CONTROLLER CABINET AS PER STANDARD SHEET 680-05.
- VEHICLE DETECTION - WHERE PAVEMENT IS RESURFACED WITH TWO COURSE OVERLAY, ALL INDUCTANCE LOOPS SHALL BE INSTALLED PRIOR TO THE INSTALLATION OF THE FINAL ASPHALT TOP COURSE, AT ALL OTHER LOCATIONS, THE INDUCTANCE LOOPS SHALL BE INSTALLED ON THE FINAL ROADWAY SURFACE.
- CONTRACTOR SHALL SUBMIT TRAFFIC SIGNAL POLE SPECIFICATIONS TO THE VILLAGE FOR APPROVAL. TRAFFIC SIGNAL POLES SHALL MATCH HOLOPHANE NORTH YORKSHIRE POLES OR SIMILAR AS APPROVED BY THE VILLAGE.
- STREET LIGHTING ASSEMBLES SHALL BE MOUNTED ON THE TRAFFIC SIGNAL POLES AS INDICATED ON THE PLANS. WIRING FOR THE LIGHTING SHALL BE DESIGNED BY THE CONTRACTOR AND SHALL MEET THE NFPA 70 - NATIONAL ELECTRICAL CODE, 2014. WIRING, MAST ARM AND LUMINAIRE SHALL BE PAID FOR UNDER ITEM B670.51350008. LIGHTING ASSEMBLY SHALL BE HOLOPHANE BOSTON HARBOUR 6' ONE WAY ARM, OR SIMILAR AS APPROVED BY THE VILLAGE. THE LUMINAIRE SHALL BE AN ASYMMETRIC TEARDROP TYPE GLASS OR SIMILAR AS APPROVED BY THE VILLAGE.
- FINISH COAT COLOR FOR THE TRAFFIC SIGNAL POLE, TRAFFIC SIGNAL MAST ARM, AND LIGTHING MAST ARM SHALL BE BROWN. THE COLOR SHALL CONFORM TO FEDERAL COLOR STANDARD NO. 595 NUMBER 31090.

AFFIX SEAL:
ON: _____

ALTERED BY:
ON: _____

NOT FOR
CONSTRUCTION

AS-BUILT REVISIONS DESCRIPTION OF ALTERATIONS:	PONDFIELD ROAD & MIDLAND AVENUE INTERSECTION AND PEDESTRIAN IMPROVEMENTS	ALL DIMENSIONS IN FT UNLESS OTHERWISE NOTED	CONTRACT NUMBER
	PONDFIELD ROAD & GRAMATAN AVENUE INTERSECTION AND PEDESTRIAN IMPROVEMENTS	GENERAL NOTES	DRAWING NO. GMM SHEET NO. 4 of 12
	VILLAGE OF BRONXVILLE		
	WESTCHESTER COUNTY, NEW YORK		
IT IS A VIOLATION OF LAW FOR ANY PERSON, UNLESS THEY ARE ACTING UNDER THE DIRECTION OF A LICENSED PROFESSIONAL ENGINEER, ARCHITECT, LANDSCAPE ARCHITECT, OR LAND SURVEYOR, TO ALTER AN ITEM IN ANY WAY. IF AN ITEM BEARING THE STAMP OF A LICENSED PROFESSIONAL IS ALTERED, THE ALTERING ENGINEER, ARCHITECT, LANDSCAPE ARCHITECT, OR LAND SURVEYOR SHALL STAMP THE DOCUMENT AND INCLUDE THE NOTATION "ALTERED BY" FOLLOWED BY THEIR SIGNATURE, THE DATE OF SUCH ALTERATION, AND A SPECIFIC DESCRIPTION OF THE ALTERATION.		 500 Summit Lake Drive, 4th Floor, Suite 450 Valhalla, NY 10595 (914) 747-1120 www.wsp.com	

FILE NAME : DGN\$SPEC01234567890123456789012345678901234
DATE/TIME : DGN\$SYTIME0123456
USER : DGN\$USERNAME

PROJECT MANAGER NS

CHECK NS

DRAFTING EG

CHECK NS

DESIGN JS

JOB MANAGER NS

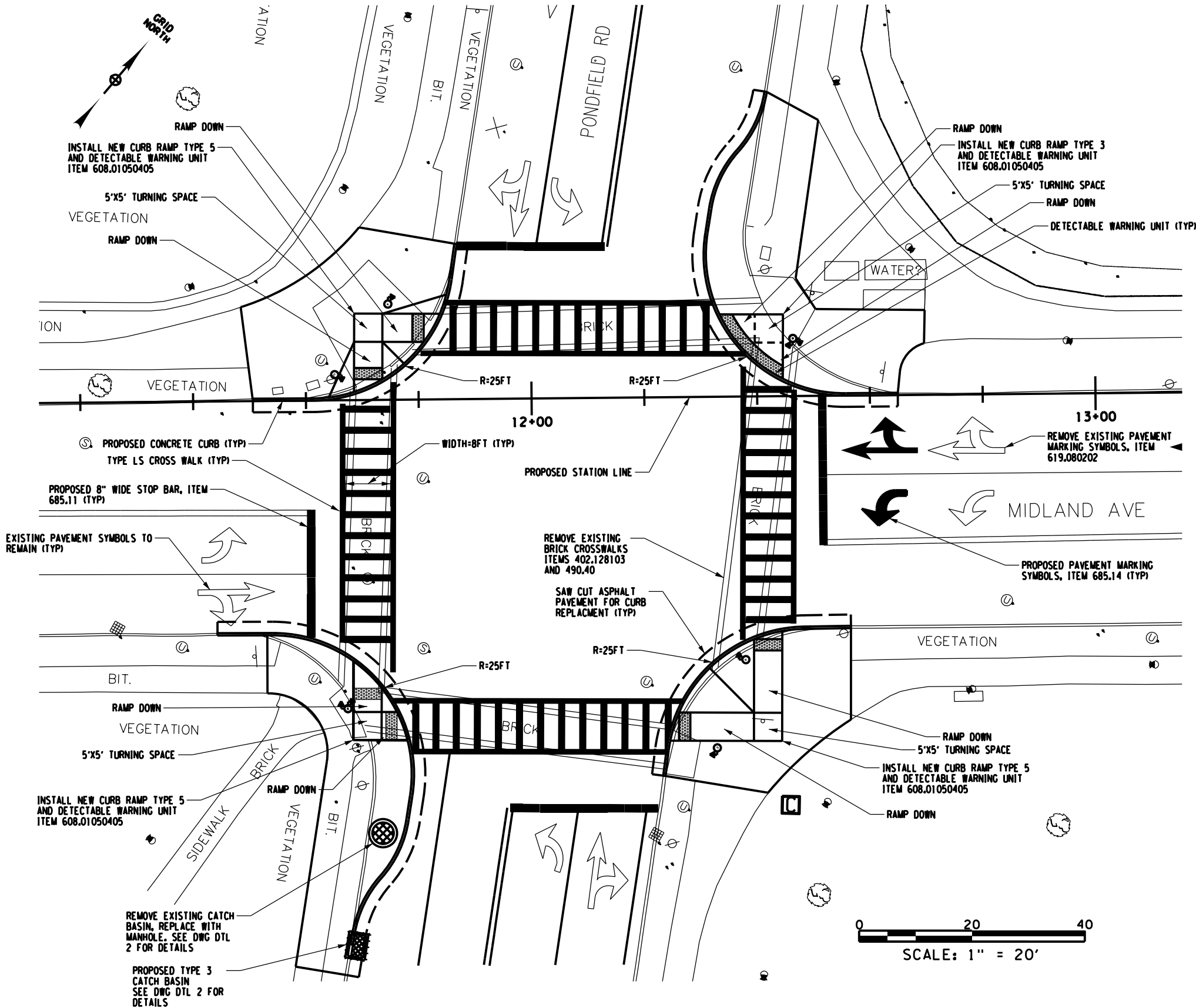
DESIGN SUPERVISOR NS

TABLE OF CURB						
STATION TO STATION				SIDE	RADIUS	LENGTH
STA	OFFSET	STA	OFFSET			
1+28.578	21.446	1+63.551	46.479	R	20	34.973
1+34.728	19.360	1+70.762	47.848	L	20	36.034
2+07.539	46.362	2+40.906	19.323	R	20	33.367
2+14.634	45.860	2+49.119	21.653	L	20	34.485

ALIGNMENT TABLE - MIDLAND AVENUE				
POINT	STATION	NORTHING	EASTING	BEARING
POB	10+00.00	76640.089	676659.961	
POE	14+79.98	766880.171	677075.584	N 59°59'14.4" E

NOTES:

- AS PER SPECIFICATION, CURB RAMPS INCLUDE THE FOLLOWING ITEMS OF WORK:
 - DEMOLITION, SAW CUTTING, DISPOSAL OF EXISTING CONCRETE SIDEWALK/CURB,
 - FILL, COMPACTION,
 - CONSTRUCTION OF NEW CURB RAMPS, TURNING SPACES, TRANSITION PANELS, AND ASSOCIATED CURBING,
 - FURNISH AND INSTALL DETECTABLE WARNING UNITS,
 - REPAIRS TO AFFECTED ASPHALT AND CONCRETE AS NECESSARY, TOPSOIL, ESTABLISHING TURF ON DISTURBED AREAS, AND FINISH WORK,
- EXCAVATION AND DISPOSAL BENEATH CURB RAMPS AND SIDEWALKS SHALL BE PAID FOR UNDER ITEM 608.02010015 AND SUBBASE BENEATH CURB RAMPS SHALL BE PAID FOR UNDER ITEM 608.02020015.
- EXISTING UTILITY MANHOLES AND VAULTS WITHIN PROPOSED SIDEWALK WORK SHALL BE ADJUSTED TO PROPOSED GRADES, PAYMENT SHALL BE MADE UNDER SERIALIZED ITEMS 660.6500NN01.
- DETECTABLE WARNING UNITS SHALL BE COLORED XXX.
- CURB TRANSITIONS FROM EXISTING TO PROPOSED (MOUNTABLE OR STANDARD) TO CURB RAMPS ARE NOT SHOWN HERE FOR CLARITY. CONTRACTOR SHALL INCORPORATE THESE TRANSITIONS INTO THE WORK AS APPROPRIATE AND AS PER THE NYSOT STANDARD SHEETS.



AFFIX SEAL:
ON: _____

ALTERED BY:
ON: _____

NOT FOR
CONSTRUCTION

AS-BUILT REVISIONS
DESCRIPTION OF ALTERATIONS:

PODFIELD ROAD & MIDLAND AVENUE INTERSECTION AND PEDESTRIAN IMPROVEMENTS

PODFIELD ROAD & GRAMATAN AVENUE INTERSECTION AND PEDESTRIAN IMPROVEMENTS

VILLAGE OF BRONXVILLE

WESTCHESTER COUNTY, NEW YORK

ALL DIMENSIONS IN FT UNLESS OTHERWISE NOTED

MIDLAND AVENUE
GENERAL PLAN

CONTRACT NUMBER

DRAWING NO. MID 1
SHEET NO. 5 of 12

IT IS A VIOLATION OF LAW FOR ANY PERSON, UNLESS THEY ARE ACTING UNDER THE DIRECTION OF A LICENSED PROFESSIONAL ENGINEER, ARCHITECT, LANDSCAPE ARCHITECT, OR LAND SURVEYOR, TO ALTER AN ITEM IN ANY WAY. IF AN ITEM BEARING THE STAMP OF A LICENSED PROFESSIONAL IS ALTERED, THE ALTERING ENGINEER, ARCHITECT, LANDSCAPE ARCHITECT, OR LAND SURVEYOR SHALL STAMP THE DOCUMENT AND INCLUDE THE NOTATION "ALTERED BY" FOLLOWED BY THEIR SIGNATURE, THE DATE OF SUCH ALTERATION, AND A SPECIFIC DESCRIPTION OF THE ALTERATION.

wsp

500 Summit Lake Drive, 4th Floor, Suite 450
Valhalla, NY 10595
(914) 747-1120
www.wsp.com

FILE NAME : DGN\$SPEC01234567890123456789012345678901234
DATE/TIME : DGN\$SYTIME0123456
USER : DGN\$USERNAME

DESIGN SUPERVISOR NS

JOB MANAGER NS

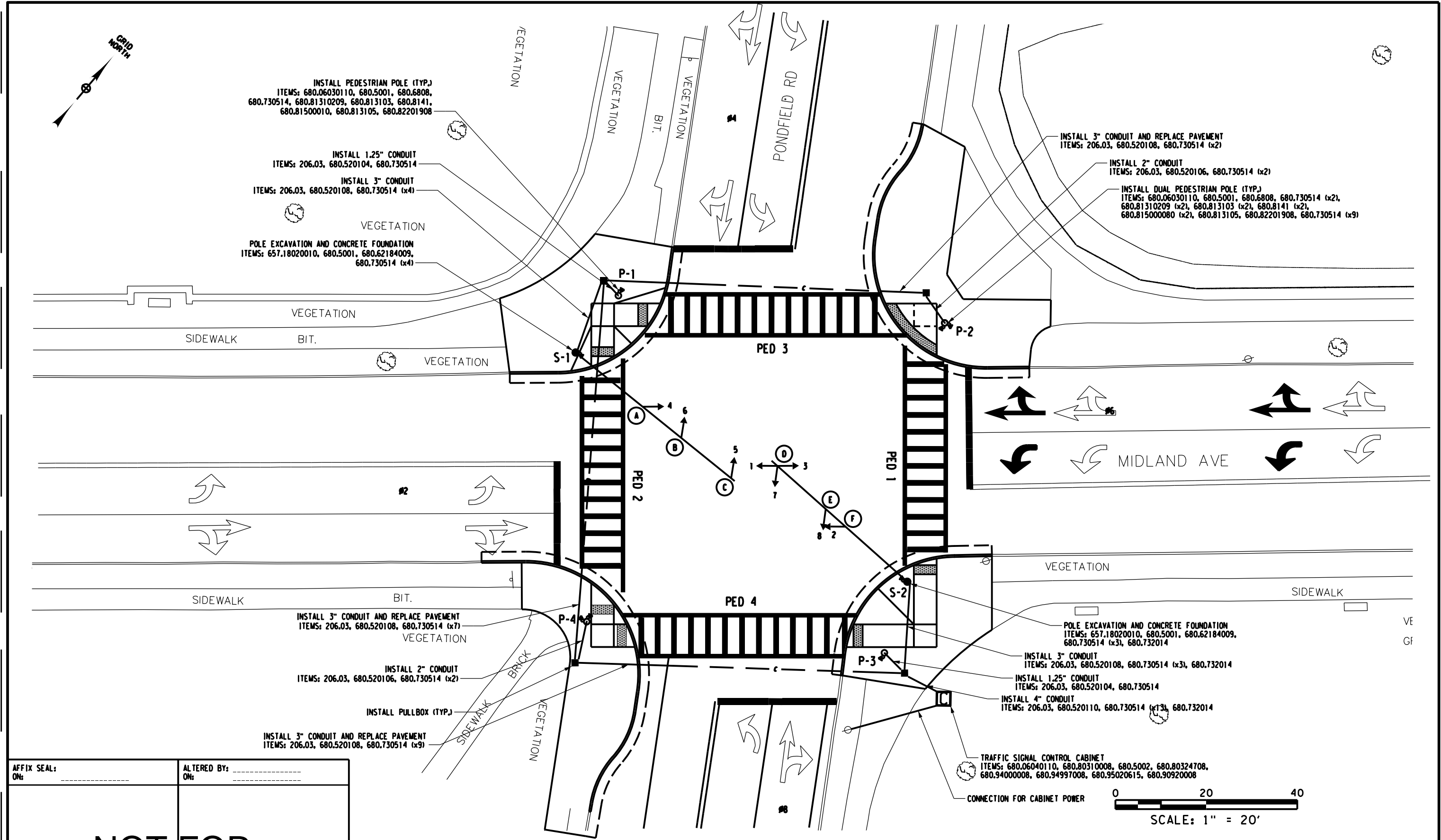
DESIGN JS

CHECK NS

DRAFTING EG

CHECK NS

PROJECT MANAGER NS




AFFIX SEAL:
ON: _____

ALTERED BY:
ON: _____

NOT FOR
CONSTRUCTION

AS-BUILT REVISIONS DESCRIPTION OF ALTERATIONS:	PONDFIELD ROAD & MIDLAND AVENUE INTERSECTION AND PEDESTRIAN IMPROVEMENTS	ALL DIMENSIONS IN FT UNLESS OTHERWISE NOTED	CONTRACT NUMBER
	PONDFIELD ROAD & GRAMATAN AVENUE INTERSECTION AND PEDESTRIAN IMPROVEMENTS		
	VILLAGE OF BRONXVILLE	MIDLAND AVE TRAFFIC SIGNAL PLAN	DRAWING NO. MID 2
	WESTCHESTER COUNTY, NEW YORK		SHEET NO. 6 OF 12

IT IS A VIOLATION OF LAW FOR ANY PERSON, UNLESS THEY ARE ACTING UNDER THE DIRECTION OF A LICENSED PROFESSIONAL ENGINEER, ARCHITECT, LANDSCAPE ARCHITECT, OR LAND SURVEYOR, TO ALTER AN ITEM IN ANY WAY. IF AN ITEM BEARING THE STAMP OF A LICENSED PROFESSIONAL IS ALTERED, THE ALTERING ENGINEER, ARCHITECT, LANDSCAPE ARCHITECT, OR LAND SURVEYOR SHALL STAMP THE DOCUMENT AND INCLUDE THE NOTATION "ALTERED BY" FOLLOWED BY THEIR SIGNATURE, THE DATE OF SUCH ALTERATION, AND A SPECIFIC DESCRIPTION OF THE ALTERATION.	 <div>500 Summit Lake Drive, 4th Floor, Suite 450 Valhalla, NY 10595 (914) 747-1120 www.wsp.com</div>
--	--

FILE NAME : DGN\$SPEC01234567890123456789012345678901234
DATE/TIME : DGN\$SYTIME0123456
USER : DGN\$USERNAME

DESIGN SUPERVISOR

JOB MANAGER

DESIGN

CHECK

DRAFTING

CHECK

PROJECT MANAGER

AFFIX SEAL:
ON: _____

ALTERED BY: _____
ON: _____

NOT FOR
CONSTRUCTION

AS-BUILT REVISIONS
DESCRIPTION OF ALTERATIONS:

PONDFIELD ROAD & MIDLAND AVENUE INTERSECTION AND PEDESTRIAN IMPROVEMENTS
PONDFIELD ROAD & GRAMATAN AVENUE INTERSECTION AND PEDESTRIAN IMPROVEMENTS
VILLAGE OF BRONXVILLE
WESTCHESTER COUNTY, NEW YORK

IT IS A VIOLATION OF LAW FOR ANY PERSON, UNLESS THEY ARE ACTING UNDER THE DIRECTION OF A LICENSED PROFESSIONAL ENGINEER, ARCHITECT, LANDSCAPE ARCHITECT, OR LAND SURVEYOR, TO ALTER AN ITEM IN ANY WAY. IF AN ITEM BEARING THE STAMP OF A LICENSED PROFESSIONAL IS ALTERED, THE ALTERING ENGINEER, ARCHITECT, LANDSCAPE ARCHITECT, OR LAND SURVEYOR SHALL STAMP THE DOCUMENT AND INCLUDE THE NOTATION "ALTERED BY" FOLLOWED BY THEIR SIGNATURE, THE DATE OF SUCH ALTERATION, AND A SPECIFIC DESCRIPTION OF THE ALTERATION.

ALL DIMENSIONS IN FT UNLESS OTHERWISE NOTED

MIDLAND AVENUE
TRAFFIC SIGNAL PLAN

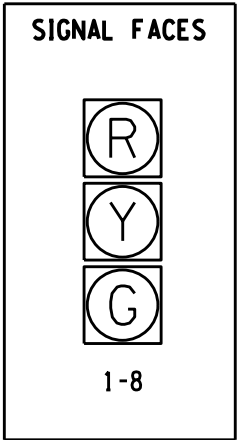
CONTRACT NUMBER

DRAWING NO. MID 3
SHEET NO. 7 of 12

TRAFFIC SIGNAL TABLES								
POLE NO.	LOCATION			ELEV. OF FOOTING CAP	ITEM	MOUNTING HEIGHT (FT)	DESIGN LOAD (K)	FOOTING MOMENT (FT-K)
	CENTERLINE STATION	OFFSET	SIDE					
S-1					680.62184009	18	-	
S-2					680.62184009	18	-	
P-1					680.6808	8	2.0	15
P-2					680.6808	8	2.0	15
P-3					680.6808	8	2.0	15
P-4					680.6808	8	2.0	15

TABLE OF HEADS						
HEAD	BRACKET	FACE	MODULES			SECT. 680.810107 TRAFFIC SIGNAL SECTION, TYPE 1 12 INCH
			680.810101 RED BALL	680.810103 YELLOW BALL	680.810105 GREEN BALL	
A	680.8111	4	1	1	1	3
B	680.8111	6	1	1	1	3
C	680.8111	5	1	1	1	3
D	680.8114	1	1	1	1	5
		3	1	1	1	3
		7	1	1	1	3
E	680.8111	8	1	1	1	3
F	680.8111	2	1	1	1	3

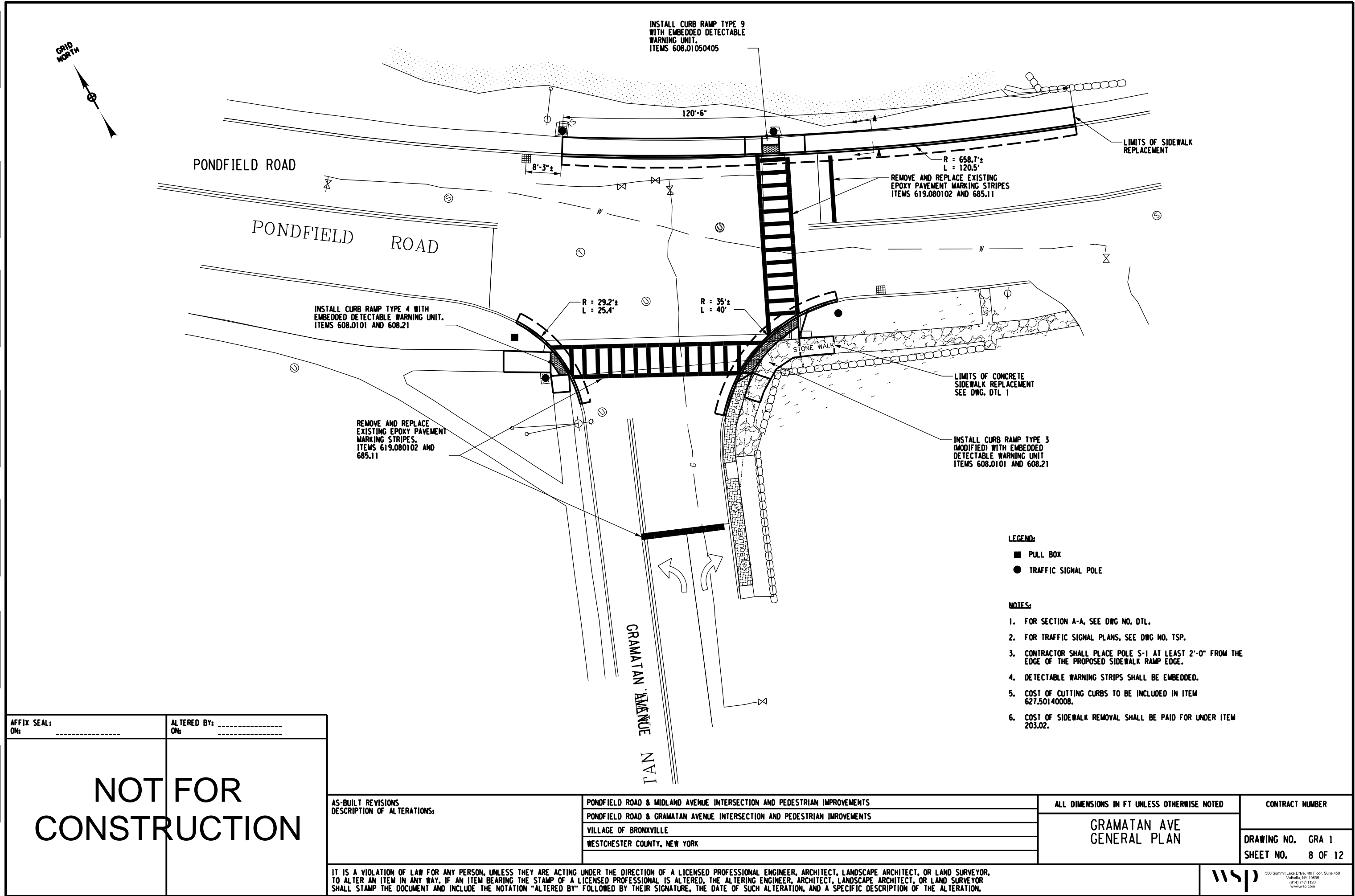
SEQUENCE TABLE													
PHASE	FACE								PED 1	PED 2	PED 3	PED 4	<div><div>ø2+ø6</div><div>ø4+ø8</div></div>
	1	2	3	4	5	6	7	8					
ø2+ø6	G	G	G	G	R	R	R	R	DW	DW	W	W	
CL TO ø2+ø6	Y	Y	Y	Y	R	R	R	R	DW	DW	FDW	FDW	
ø4+ø8	R	R	R	R	G	G	G	G	W	W	DW	DW	
PED CL TO ø4+ø8	R	R	R	R	Y	Y	Y	Y	FDW	FDW	DW	DW	
FLASHING OPERATION	Y	Y	Y	Y	R	R	R	R	DARK	DARK	DARK	DARK	



- NOTES:
- CONTRACTOR SHALL DETERMINE THE ELEVATION OF THE TOP OF FOOTING CAP FOR ALL TRAFFIC SIGNAL POLES BASED ON THE FINAL GROUND ELEVATIONS.
 - FOUNDATIONS SHALL BE CONSTRUCTED AS PER NYSDOT STANDARD SHEET 680-01.
 - FINISH COAT COLOR FOR THE TRAFFIC SIGNAL POLE, TRAFFIC SIGNAL MAST ARM, AND LIGHTING MAST ARM SHALL BE BROWN. THE COLOR SHALL CONFORM TO FEDERAL COLOR STANDARD NO. 595 NUMBER 31090.

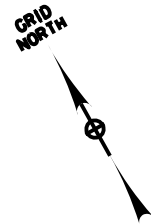
FILE NAME : DGN\$SPEC01234567890123456789012345678901234
DATE/TIME : DGN\$SYTIME0123456
USER : DGN\$USERNAME

DESIGN SUPERVISOR NS PROJECT MANAGER NS CHECK NS DRAFTING EG CHECK NS DESIGN JS JOB MANAGER NS



FILE NAME : DGN\$SPEC01234567890123456789012345678901234
DATE/TIME : DGN\$SYTIME0123456
USER : DGN\$USERNAME

DESIGN SUPERVISOR NS JOB MANAGER NS DESIGN JS DRAFTING EG CHECK NS CHECK NS PROJECT MANAGER NS



POLE EXCAVATION AND CONCRETE FOUNDATION
ITEM 680.5001
FOR PAY ITEMS, SEE DWG TST
FURNISH AND INSTALL DECORATIVE STREET LIGHTING,
SEE NOTE 5; ITEM B670.51350008

EXISTING POLE AND SIGNAL TO BE REMOVED (TYP.)

INSTALL 3" CONDUIT
ITEMS 206.03, 680.520108, 680.730514 (3)

EXISTING POLE AND SIGNAL TO BE REMOVED (TYP.)

INSTALL PEDESTRIAN SIGNAL
POLE (TYP.)

PONDFIELD ROAD

INSTALL 3" CONDUIT AND REPLACE PAVEMENT
ITEMS 206.03, 680.520108, 680.730514

INSTALL PULLBOX (TYP.)

INSTALL 2" CONDUIT
ITEMS 206.03, 680.520106,
680.730514

INSTALL PEDESTRIAN SIGNAL POLE
(TYP.) ITEMS 680.5001, 680.6808,
680.730514, 680.813103, 680.813105,
680.8141, 680.82201908,
680.81500010

EXISTING POLE AND SIGNAL
TO BE REMOVED (TYP.)
ITEM 680.79010008

EXISTING STREET LIGHT ASSEMBLY
TO BE REMOVED (TYP.)
ITEM 680.79010008

INSTALL 3" CONDUIT AND REPLACE PAVEMENT
ITEMS 206.03, 680.520108, 680.730514 (4)

CONNECTION FOR CABINET POWER

INSTALL METER PEDESTAL
ITEMS: 680.90920008, 680.94997008

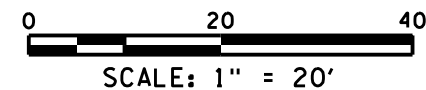
TRAFFIC SIGNAL CONTROL CABINET
ITEMS: 680.06040110, 680.5002, 680.80310008,
680.80324708, 680.94000008, 680.95020615

POLE EXCAVATION AND CONCRETE FOUNDATION
ITEM 680.5001

FURNISH AND INSTALL DECORATIVE STREET LIGHTING,
SEE NOTE 5; ITEM B670.51350008

INSTALL 360 DEGREE CAMERA VIDEO DETECTION SYSTEM
AND CAMERA ASSEMBLY
ITEMS: 680.05010007, 680.05020007

GRAMATAN AVENUE



AFFIX SEAL: ON: _____	ALTERED BY: ON: _____
NOT FOR CONSTRUCTION	

AS-BUILT REVISIONS DESCRIPTION OF ALTERATIONS:	PONDFIELD ROAD & MIDLAND AVENUE INTERSECTION AND PEDESTRIAN IMPROVEMENTS	ALL DIMENSIONS IN FT UNLESS OTHERWISE NOTED	CONTRACT NUMBER
	PONDFIELD ROAD & GRAMATAN AVENUE INTERSECTION AND PEDESTRIAN IMPROVEMENTS		
	VILLAGE OF BRONXVILLE		
	WESTCHESTER COUNTY, NEW YORK		
IT IS A VIOLATION OF LAW FOR ANY PERSON, UNLESS THEY ARE ACTING UNDER THE DIRECTION OF A LICENSED PROFESSIONAL ENGINEER, ARCHITECT, LANDSCAPE ARCHITECT, OR LAND SURVEYOR, TO ALTER AN ITEM IN ANY WAY. IF AN ITEM BEARING THE STAMP OF A LICENSED PROFESSIONAL IS ALTERED, THE ALTERING ENGINEER, ARCHITECT, LANDSCAPE ARCHITECT, OR LAND SURVEYOR SHALL STAMP THE DOCUMENT AND INCLUDE THE NOTATION "ALTERED BY" FOLLOWED BY THEIR SIGNATURE, THE DATE OF SUCH ALTERATION, AND A SPECIFIC DESCRIPTION OF THE ALTERATION.		GRAMATAN AVE TRAFFIC SIGNAL PLAN	
		DRAWING NO. GRA 2	
		SHEET NO. 9 OF 12	

FILE NAME : DGN\$SPEC01234567890123456789012345678901234
DATE/TIME : DGN\$SYTIME0123456
USER : DGN\$USERNAME

DESIGN SUPERVISOR

JOB MANAGER

DESIGN

CHECK

DRAFTING

CHECK

PROJECT MANAGER

AFFIX SEAL: ON: _____	ALTERED BY: _____ ON: _____
<div></div>	

AS-BUILT REVISIONS DESCRIPTION OF ALTERATIONS:	PONDFIELD ROAD & MIDLAND AVENUE INTERSECTION AND PEDESTRIAN IMPROVEMENTS
	PONDFIELD ROAD & GRAMATAN AVENUE INTERSECTION AND PEDESTRIAN IMPROVEMENTS
	VILLAGE OF BRONXVILLE
	WESTCHESTER COUNTY, NEW YORK

IT IS A VIOLATION OF LAW FOR ANY PERSON, UNLESS THEY ARE ACTING UNDER THE DIRECTION OF A LICENSED PROFESSIONAL ENGINEER, ARCHITECT, LANDSCAPE ARCHITECT, OR LAND SURVEYOR, TO ALTER AN ITEM IN ANY WAY. IF AN ITEM BEARING THE STAMP OF A LICENSED PROFESSIONAL IS ALTERED, THE ALTERING ENGINEER, ARCHITECT, LANDSCAPE ARCHITECT, OR LAND SURVEYOR SHALL STAMP THE DOCUMENT AND INCLUDE THE NOTATION "ALTERED BY" FOLLOWED BY THEIR SIGNATURE, THE DATE OF SUCH ALTERATION, AND A SPECIFIC DESCRIPTION OF THE ALTERATION.

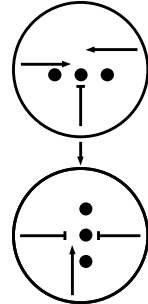
PONDFIELD ROAD & MIDLAND AVENUE INTERSECTION AND PEDESTRIAN IMPROVEMENTS	
PONDFIELD ROAD & GRAMATAN AVENUE INTERSECTION AND PEDESTRIAN IMPROVEMENTS	
VILLAGE OF BRONXVILLE	
WESTCHESTER COUNTY, NEW YORK	

ALL DIMENSIONS IN FT UNLESS OTHERWISE NOTED	
GRAMATAN AVE TRAFFIC SIGNAL TABLES	

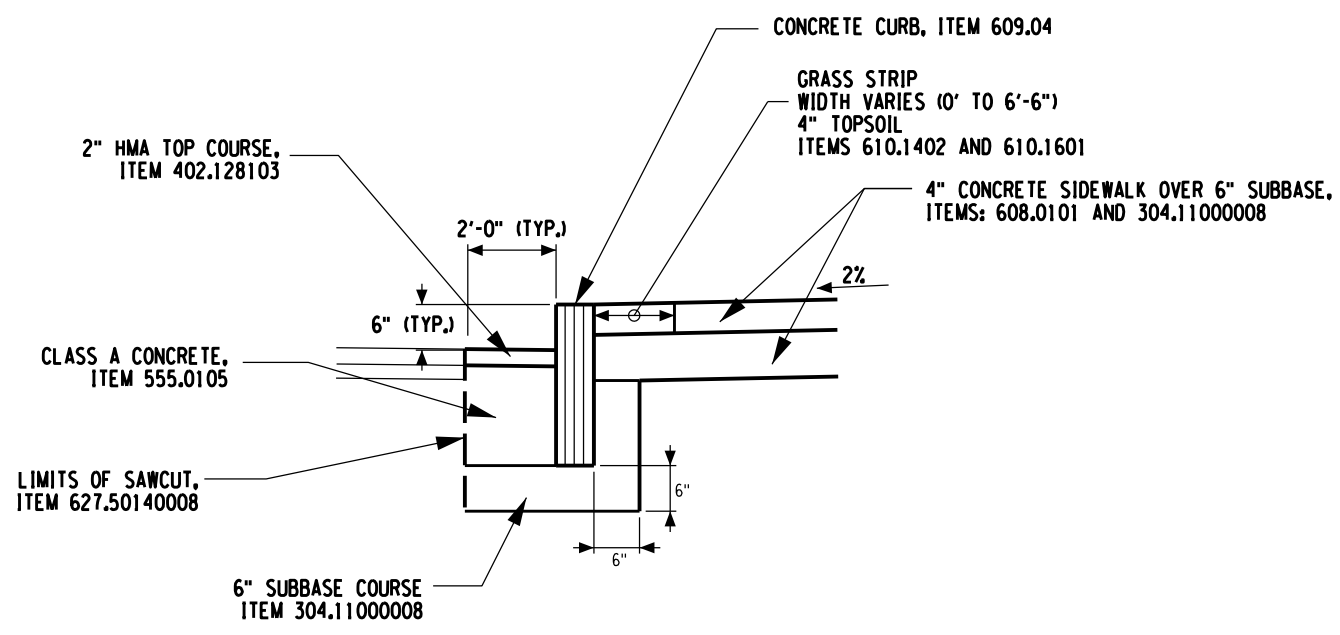
CONTRACT NUMBER	
DRAWING NO.	GRA 3
SHEET NO.	10 OF 12

TRAFFIC SIGNAL TABLES								
POLE NO.	LOCATION			ELEV. OF FOOTING CAP	ITEM	MOUNTING HEIGHT (FT)	DESIGN LOAD (K)	FOOTING MOMENT (FT-K)
	CENTERLINE STATION	OFFSET	SIDE					
S-1					680.62183309	18	-	
S-2					680.62183009	18	-	
P-1					680.6808	8	2.0	15
P-2					680.6808	8	2.0	15

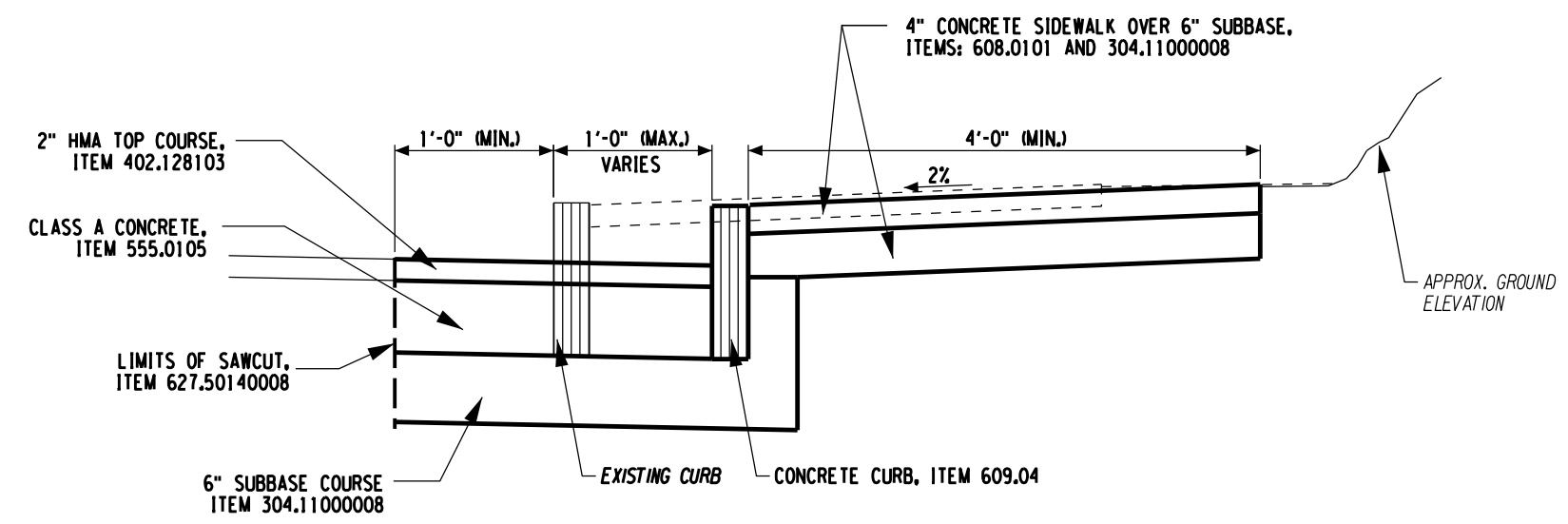
TABLE OF HEADS						
HEAD	BRACKET	FACE	MODULES			SECT.
			680.810101 RED BALL	680.810103 YELLOW BALL	680.810105 GREEN BALL	680.810107 TRAFFIC SIGNAL SECTION, TYPE 1 12 INCH
A	680.8114	1	1	1	1	3
B	680.8124	2	1	1	1	3
		3	1	1	1	3
C	680.8114	4	1	1	1	3
D	680.8124	5	1	1	1	3
		6	1	1	1	3

SEQUENCE TABLE									
PHASE	FACE						PED 1	PED 2	<div><div>ø2+ø6</div><div>ø8</div><div></div></div>
	1	2	3	4	5	6			
ø2+ø6	<R-/G	G	R	<R-/G	G	R	W	DW	
PED CL TO ø8	<R-/Y	Y	R	<R-/Y	Y	R	FDW	DW	
ø8	<R-/R	R	G	<R-/R	R	G	DW	W	
PED CL TO ø1+ø6	<R-/R	R	Y	<R-/R	R	Y	DW	FDW	
FLASHING OPERATION	Y	Y	R	Y	Y	R	DARK	DARK	

- NOTES:
- CONTRACTOR SHALL DETERMINE THE ELEVATION OF THE TOP OF FOOTING CAP FOR ALL TRAFFIC SIGNAL POLES BASED ON THE FINAL GROUND ELEVATIONS.
 - FOUNDATIONS SHALL BE CONSTRUCTED AS PER NYSOOT STANDARD SHEET 680-01.
 - PROPOSED STREET LIGHTING ASSEMBLIES SHALL CONSIST OF WIRING, CONDUIT, MAST ARM, AND LUMINAIRE. PROPOSED MAST ARM SHALL BE MOUNTED ON PROPOSED TRAFFIC SIGNAL POLES IN LOCATIONS INDICATED IN THE PLANS. WIRING FOR THE LIGHTING SHALL BE DESIGNED BY THE CONTRACTOR AND SHALL MEET THE NFPA 70 - NATIONAL ELECTRICAL CODE, 2014. WIRING, MAST ARM AND LUMINAIRE SHALL BE PAID FOR UNDER ITEM 8670.51350000. LIGHTING ASSEMBLY SHALL BE HOLOPHANE BOSTON HARBOUR 6' ONE WAY ARM, OR SIMILAR AS APPROVED BY THE VILLAGE. THE LUMINAIRE SHALL BE AN ASYMMETRIC TEARDROP TYPE GLASS OR SIMILAR AS APPROVED BY THE VILLAGE.
 - FINISH COAT COLOR FOR THE TRAFFIC SIGNAL POLE, TRAFFIC SIGNAL MAST ARM, AND LIGHTING MAST ARM SHALL BE BROWN. THE COLOR SHALL CONFORM TO FEDERAL COLOR STANDARD NO. 595 NUMBER 31090.



CURB INSTALLATION DETAIL
N.T.S.
(EMBEDDED DETECTABLE WARNING STRIP NOT SHOWN FOR CLARITY)



CURB DETAIL
N.T.S.

FILE NAME : DGN\$SPEC01234567890123456789012345678901234
DATE/TIME : DGN\$SYTIME0123456
USER : DGN\$USERNAME

DESIGN SUPERVISOR **NS** JOB MANAGER **NS** DESIGN **JS** DRAFTING **EG** CHECK **NS** CHECK **NS** PROJECT MANAGER **NS**

AFFIX SEAL: ON: _____		ALTERED BY: ON: _____	
NOT FOR CONSTRUCTION		AS-BUILT REVISIONS DESCRIPTION OF ALTERATIONS:	
		IT IS A VIOLATION OF LAW FOR ANY PERSON, UNLESS THEY ARE ACTING UNDER THE DIRECTION OF A LICENSED PROFESSIONAL ENGINEER, ARCHITECT, LANDSCAPE ARCHITECT, OR LAND SURVEYOR, TO ALTER AN ITEM IN ANY WAY. IF AN ITEM BEARING THE STAMP OF A LICENSED PROFESSIONAL IS ALTERED, THE ALTERING ENGINEER, ARCHITECT, LANDSCAPE ARCHITECT, OR LAND SURVEYOR SHALL STAMP THE DOCUMENT AND INCLUDE THE NOTATION "ALTERED BY" FOLLOWED BY THEIR SIGNATURE, THE DATE OF SUCH ALTERATION, AND A SPECIFIC DESCRIPTION OF THE ALTERATION.	

AS-BUILT REVISIONS DESCRIPTION OF ALTERATIONS:

PONDFIELD ROAD & MIDLAND AVENUE / POND FIELD ROAD & MIDLAND AVENUE INTERSECTION AND PEDESTRIAN IMPROVEMENTS
POND FIELD ROAD & MIDLAND AVENUE INTERSECTION AND PEDESTRIAN IMPROVEMENTS
WESTCHESTER COUNTY, NEW YORK
WESTCHESTER COUNTY, NEW YORK

ALL DIMENSIONS IN FT UNLESS OTHERWISE NOTED	CONTRACT NUMBER
CURB DETAILS	DRAWING NO. DTL 1
	SHEET NO. 11 of 12

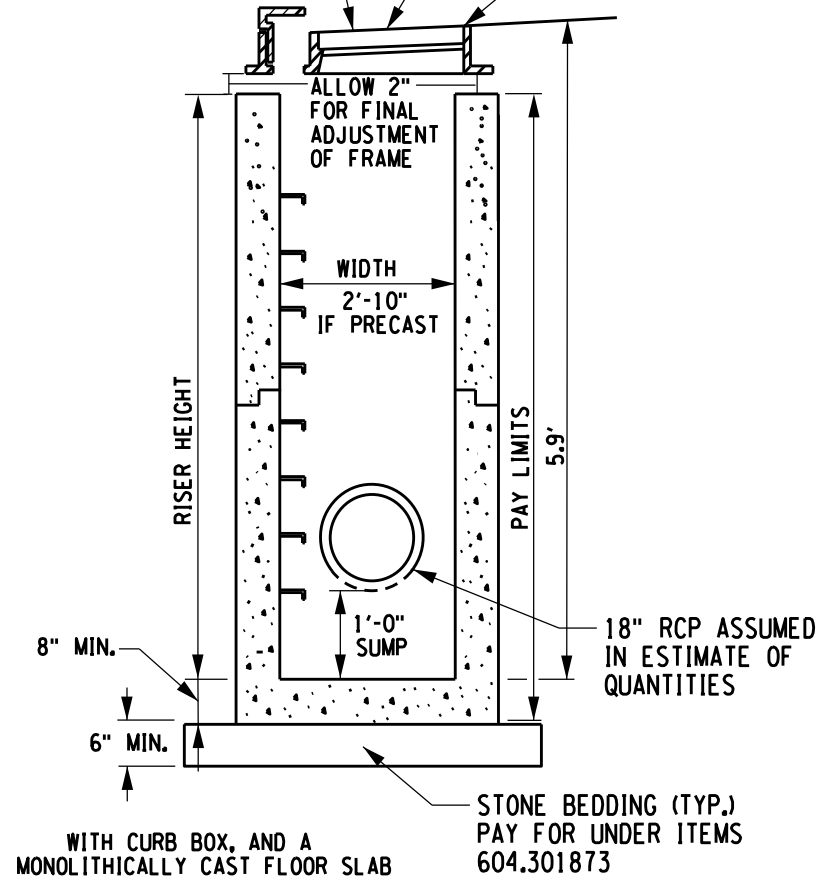
FILE NAME : DGN\$SPEC01234567890123456789012345678901234
DATE/TIME : DGN\$SYTIME0123456
USER : DGN\$USERNAME

DESIGN SUPERVISOR NS JOB MANAGER NS DESIGN JS DRAFTING EG CHECK NS PROJECT MANAGER NS

SEE STANDARD SHEET
655.0806
FOR TYPE F3 CAST
FRAMES

SEE PLANS FOR GRATE
& CURB BOX USED
AT EACH LOCATION

TOP OF PAVEMENT



RECTANGULAR DRAINAGE STRUCTURE TYPE R TYPICAL DETAIL
N.T.S.

NOTES:

1. CONTRACTOR SHALL REMOVE EXISTING FRAME AND GRATE AND INSTALL PRECAST TOP SLAB WITH MANHOLE FRAME AND COVER, PAID FOR UNDER ITEMS 604.070101 (ALTER EXISTING DRAINAGE STRUCTURE) AND 655.1202 (MANHOLE FRAME AND COVER).
2. PRIOR TO ORDERING CATCH BASIN AND DRAINAGE PIPE, CONTRACTOR SHALL PERFORM TEST PIT TO CONFIRM INVERT ELEVATION, PIPE DIAMETER, GEOMETRY, AND MATERIAL. COLLECTION OF TEST PIT DATA SHALL BE PAID FOR UNDER ITEM 206.05.

AFFIX SEAL: ON: _____	ALTERED BY: ON: _____
NOT FOR CONSTRUCTION	

AS-BUILT REVISIONS
DESCRIPTION OF ALTERATIONS:

PONDFIELD ROAD & MIDLAND AVENUE INTERSECTION AND PEDESTRIAN IMPROVEMENTS
PONDFIELD ROAD & GRAMATAN AVENUE INTERSECTION AND PEDESTRIAN IMPROVEMENTS
VILLAGE OF BRONXVILLE
WESTCHESTER COUNTY, NEW YORK

ALL DIMENSIONS IN FT UNLESS OTHERWISE NOTED

DRAINAGE UTILITY DETAILS

CONTRACT NUMBER

DRAWING NO. DTL 2
SHEET NO. 12 of 12

IT IS A VIOLATION OF LAW FOR ANY PERSON, UNLESS THEY ARE ACTING UNDER THE DIRECTION OF A LICENSED PROFESSIONAL ENGINEER, ARCHITECT, LANDSCAPE ARCHITECT, OR LAND SURVEYOR, TO ALTER AN ITEM IN ANY WAY, IF AN ITEM BEARING THE STAMP OF A LICENSED PROFESSIONAL IS ALTERED, THE ALTERING ENGINEER, ARCHITECT, LANDSCAPE ARCHITECT, OR LAND SURVEYOR SHALL STAMP THE DOCUMENT AND INCLUDE THE NOTATION "ALTERED BY" FOLLOWED BY THEIR SIGNATURE, THE DATE OF SUCH ALTERATION, AND A SPECIFIC DESCRIPTION OF THE ALTERATION.

wsp
500 Summit Lake Drive, 4th Floor, Suite 450
Valhalla, NY 10595
(914) 747-1120
www.wsp.com

