

# On-Street Dining Facility

Permit Term: April 15-November 15

Restaurant Name: IL BACCIO TRATTORIA

Restaurant Address: 1 PARK PLACE

Contact Person, Phone, & Email: SABINA RECI  
sreci87@gmail.com  
(847) 600-5568

Renewal	<input checked="" type="checkbox"/>
---------	-------------------------------------

Curbside - No Deck	<input type="checkbox"/>
Curbside - With Deck	<input type="checkbox"/>
Structural - Wood & Metal	<input type="checkbox"/>
Structural - PVC	<input type="checkbox"/>

Facade Sidewalk Dining (max. six seats)  8 seats  
2 tables

Additional Free-Standing and Decorative Elements

- Umbrellas [#: 0]
- Heaters [#: 3]
- Decorative Planters
- Lighting

ON-STREET

Please append the following to this application form:

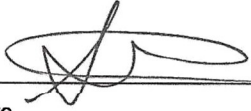
- Insurance Certificate with the Village of Bronxville as additionally insured:  
Village of Bronxville  
200 Pondfield Road  
Bronxville, NY 10708
- Hold Harmless Certificate.
- A Site Plan to scale illustrating the layout of the outdoor dining facility and compliance with all regulations in the Outdoor Dining Standards document.
- For structural facilities per the Outdoor Dining Standards document:
  - Signed & Sealed Schematic Drawings indicating the following:
    - Ingress/Egress
    - Fire Extinguisher location(s)
    - Waste Receptacle location(s)
    - Exterior Structure
    - Platform
    - Layout of movable elements within structure in accordance with the 15 sq.ft. per person/seat maximum.
  - Electrical Permit (if electric lighting is built into structure).
  - Proof of compliance with Test Method #2 NFPA 701 for floor coverings and/or decorative materials like table cloths and fake plants.

# On-Street Dining Facility

Permit Term: April 15-November 15

---

I, Sabina Reci, have read and agree to adhere to the Outdoor Dining Standards for the 2024 season put forth by the Village of Bronxville, and am aware that any non-compliance may result in permit revocation or additional fees.



Signature

03-31-2024

Date

ON-STREET





# PRECONSTRAINT

502 SATIN



**Serge Ferrari** 



## MAIN FEATURES

- Satin finish
- Reinforced dirt resistance and easy cleanability
- Dimensional stability
- 10 year warranty\*
- Longevity

## APPLICATIONS

- Facade blinds, awnings
- Canopies
- Velums and pergolas
- Shade sails
- Light structures and fixed awnings



Satin finish compliments current architectural trends



Aesthetics and comfort that lasts



Durability and reliability guaranteed by Précontraint Serge Ferrari® technology

\* For static applications

## Maximum creativity

- A unique satin finish to give a modern and high end look to your projects.
- A palette of 40 colours to give personality to the most varied designs.
- Flexibility and strength provides total freedom of shape and size.

## Innovation and Performance

- A weldable PVDF treatment improves dirt resistance
- A very smooth finish ensures easy upkeep.
- Protection against heat, inclement weather conditions for your comfort all year long.
- A maximum UV protection : Précontraint 502 Satin filters 100% of UVB rays (UPF 50+ for all the colours)

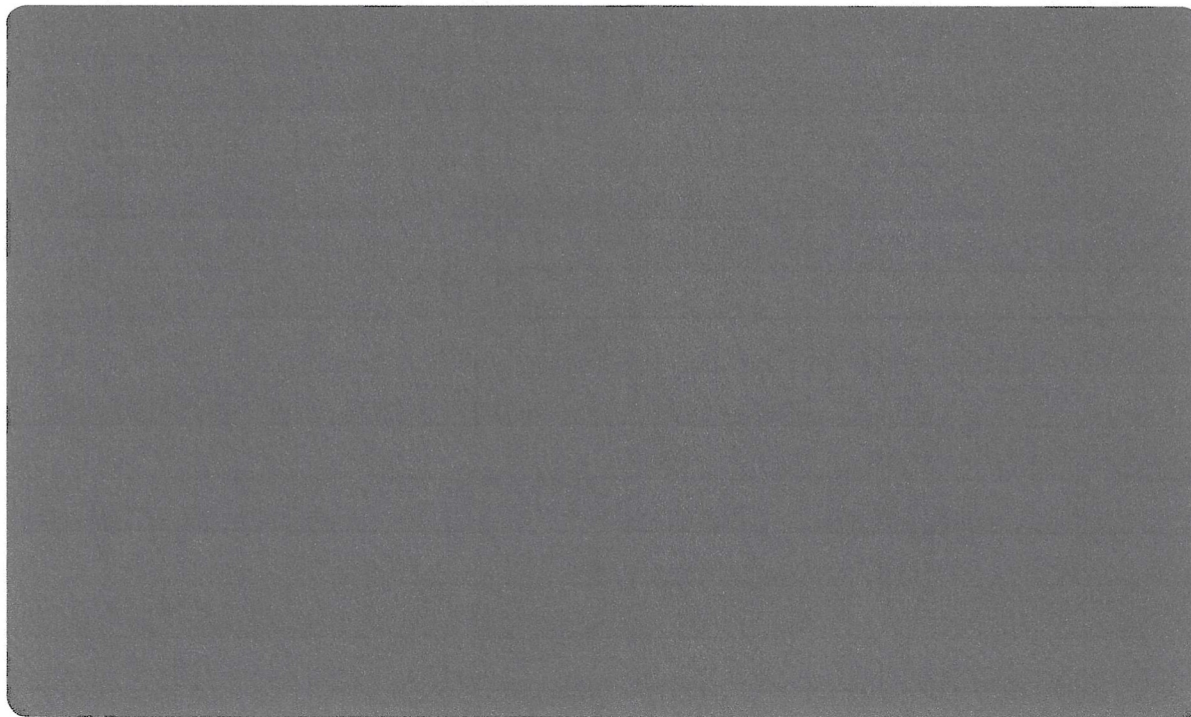
## Proven longevity

- Exceptional long-term mechanical resistance avails the most demanding structures.
- High UV resistance of colours due to rigorous pigment selection.



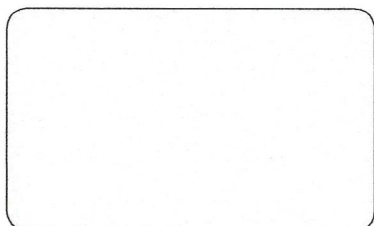
# PRECONTRAIN

502 SATIN



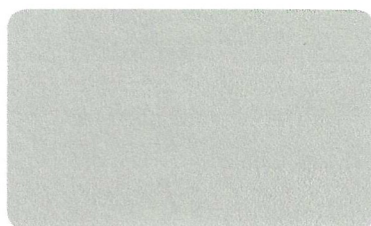
Concrete

502V2-2167C



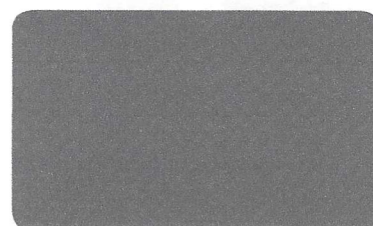
White

502V2-8102C



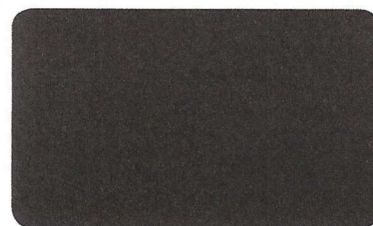
Boulder

502V2-2171C



Concrete

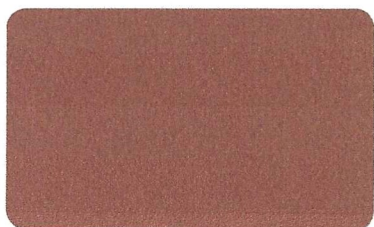
502V2-2167C



Black

502V2-8450C

## METALLIC COLOURS



Velvet red

502V2-2152C



Autumn

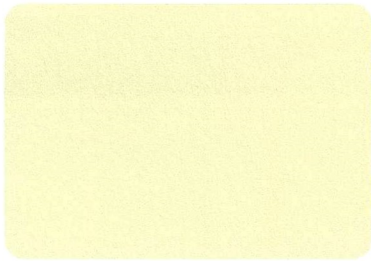
502V2-2138C



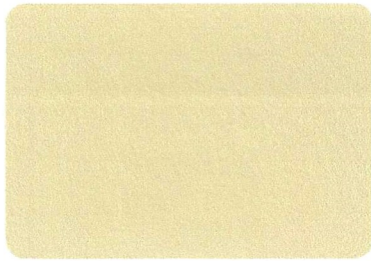
Aluminium

502V2-2168C

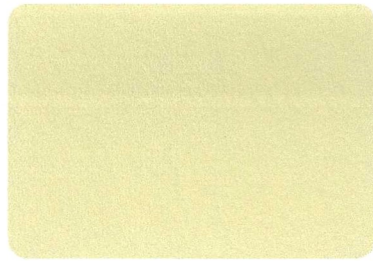




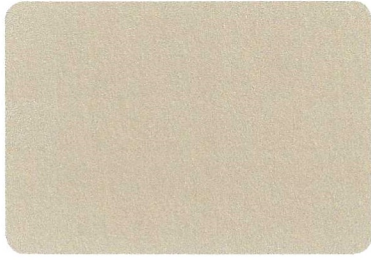
**Champagne** 502V2-8341C



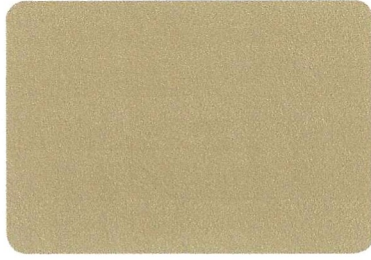
**Vanilla** 502V2-8861C



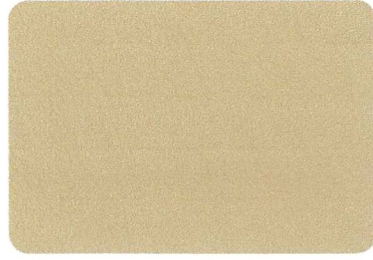
**Hemp** 502V2-50265C



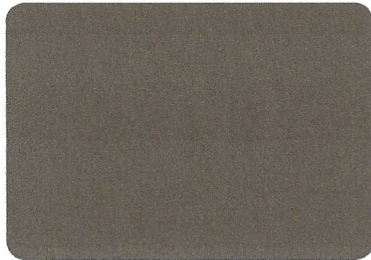
**Sandy beige** 502V2-2135C



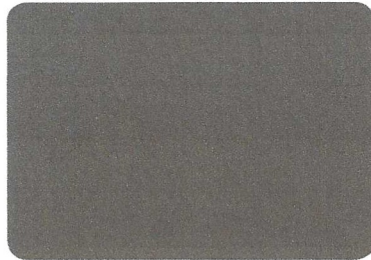
**Pepper** 502V2-2012C



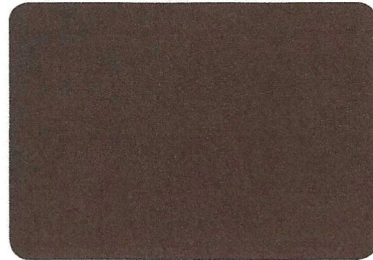
**Camel** 502V2-2141C



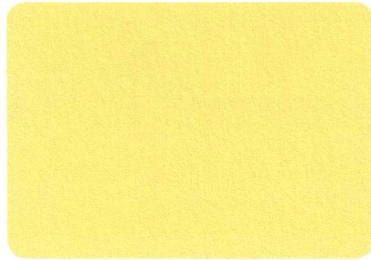
**Cocoa** 502V2-2148C



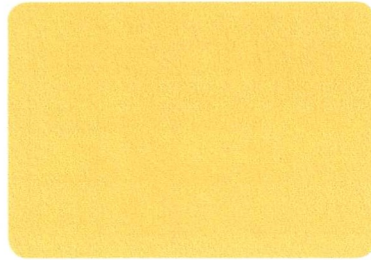
**Teak** 502V2-50669C



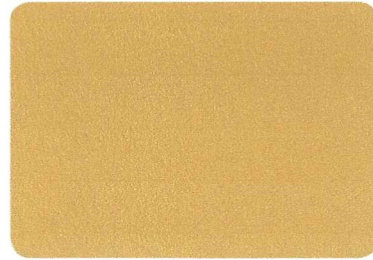
**Walnut stain** 502V2-2137C



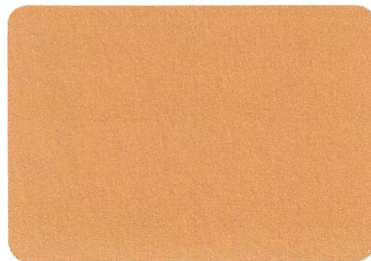
**Lemon** 502V2-50674C



**Buttercup** 502V2-2166C



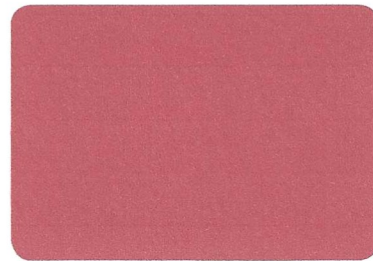
**Dijon** 502V2-50671C



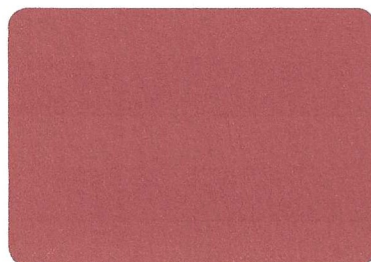
**Orange** 502V2-8204C



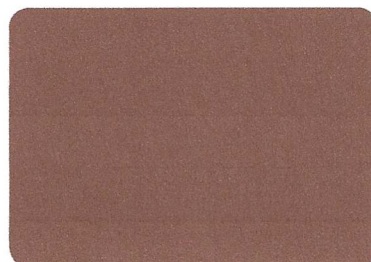
**Carrot** 502V2-2172C



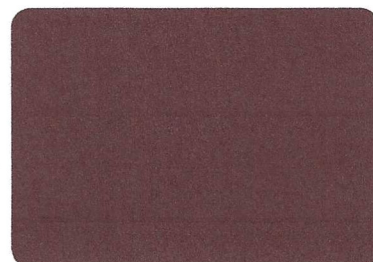
**Raspberry** 502V2-2150C



**Poppy** 502V2-8255C

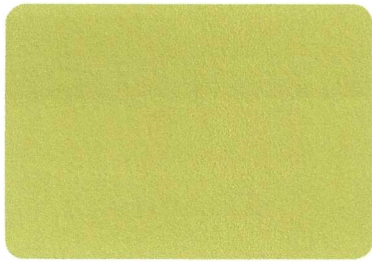


**Terracotta** 502V2-20185C



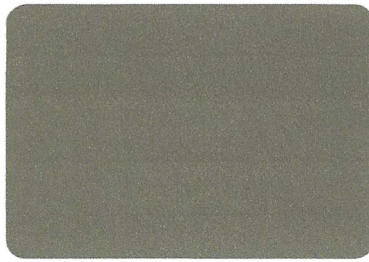
**Burgundy** 502V2-8284C





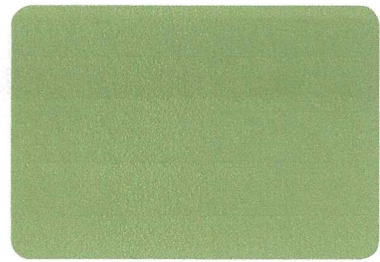
**Aniseed**

502V2-2157C



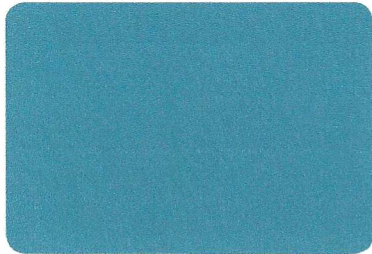
**Olive**

502V2-50668C



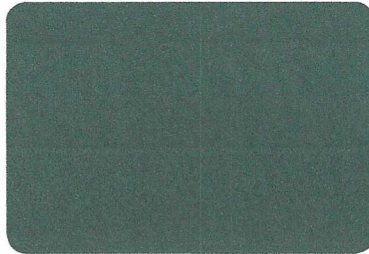
**Moss green**

502V2-2158C



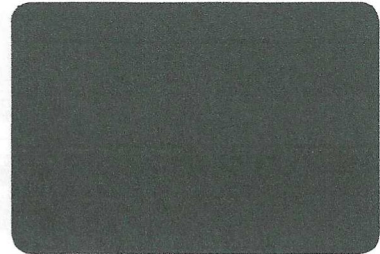
**Porcelain green**

502V2-50670C



**Tennis green**

502V2-8056C



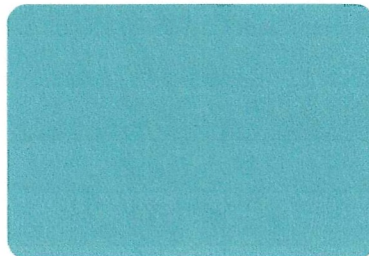
**Spruce**

502V2-2156C



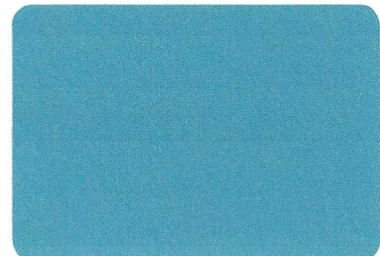
**Celadon**

502V2-50675C



**Steel blue**

502V2-50676C



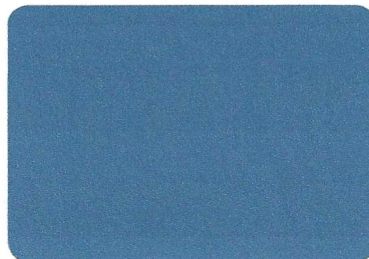
**Lagoon**

502V2-2160C



**Dark blue**

502V2-50673C



**Thistle blue**

502V2-50270C



**Celestial blue**

502V2-50672C



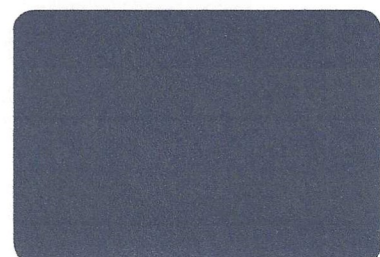
**Victoria Blue**

502V2-50677C



**Midnight blue**

502V2-2161C



**Marine**

502V2-1125C



## Solar and light properties (EN 14501)

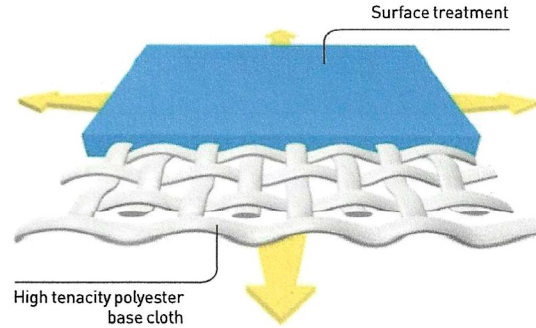
	Reference	TS	RS	AS
	502V2-1125C	6	17	77
	502V2-2012C	1	38	61
	502V2-2135C	5	61	34
	502V2-2137C	0	18	82
	502V2-2138C	2	34	64
	502V2-2141C	6	49	45
	502V2-2148C	1	25	74
	502V2-2150C	12	45	43
	502V2-2152C	7	38	55
	502V2-2156C	1	15	84
	502V2-2157C	10	53	37
	502V2-2158C	2	36	62
	502V2-2160C	5	35	60
	502V2-2161C	6	28	66
	502V2-2166C	15	58	27
	502V2-2167C	1	27	72
	502V2-2168C	1	46	53
	502V2-2171C	2	51	47
	502V2-2172C	14	49	37
	502V2-8056C	1	18	81
	502V2-8102C	11	80	9
	502V2-8204C	16	47	37
	502V2-8255C	18	37	45
	502V2-8284C	1	18	81
	502V2-8341C	11	72	17
	502V2-8450C	0	16	84
	502V2-8861C	4	65	31
	502V2-20185C	2	28	70
	502V2-50265C	1	47	52
	502V2-50270C	0	16	84
	502V2-50668C	1	21	78
	502V2-50669C	0	11	89
	502V2-50670C	1	22	77
	502V2-50671C	4	42	54
	502V2-50672C	2	25	73
	502V2-50673C	1	18	81
	502V2-50674C	10	59	31
	502V2-50675C	8	59	33
	502V2-50676C	8	47	45
	502V2-50677C	7	34	59

**TS** : Solar Transmission (%)  
**RS** : Solar Reflection (%)  
**AS** : Solar Absorption (%)  
**TS + RS + AS = 100%** of incident energy

# Exclusive Précontraint Serge Ferrari® technology



Patented worldwide, Précontraint Serge Ferrari® technology involves keeping the composite under tension throughout the manufacturing cycle.



## Strength characteristics

- Exceptional dimensional stability
- Long-term strength
- Greater coating thickness at the top of the yarns
- Exceptional flatness

## Benefits\*

- **No deformation; won't sag**
- **Tear resistant**
- **Long-term aesthetics and strength**
- **Smooth finish, easy maintenance**

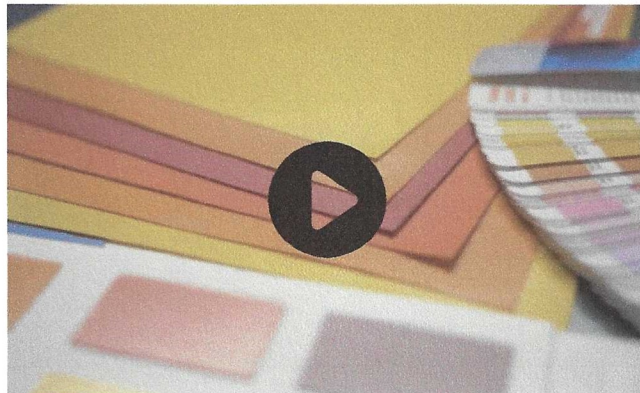
\* Benefits observed for normal product usage

## To know **more**

Scan the QR code hereunder to view our video presenting the new Précontraint 502 Satin range !

Visit our website for further information:

[www.sergeferrari.com](http://www.sergeferrari.com)





# PRECONTRAIN

## 502 SATIN

Technical properties	Précontraint 502 SATIN	Standards
Weight	570 g/m <sup>2</sup> • 16.8 oz/sqyd	EN ISO 2286-2
Width	180 cm • 70.9"	
<b>Length of the rolls</b>		
Standard format length	40 lm • 43.74 yds	
<b>Physical properties</b>		
Tensile strength (warp/weft)	200/200 daN/ 5 cm	EN ISO 1421
Tear strength (warp/weft)	20/20 daN	DIN 53.363
Adhesion	7/7 daN/ 5 cm	EN ISO 2411
<b>Surface treatment</b>		
Finish	PVDF Varnish both sides	
<b>Flame retardancy</b>		
Rating	<b>M2/NFP 92-507 • M2/UNE 23727 • Method 1 and 2/NFPA 701 • CSFMT19 • CLASS A/ASTME84 • BS 7837 • B1/DIN 4102-1 • CLASSE 2/UNI 9177 • CAN/ULC-S109 • Schwerbrennbar Q1-Tr1/ONORM A3800-1 • 1530.2/AS/NZS G1/GOST 302944-94 • B-s2,d0/EN 13501-1</b>	
Euroclass	<b>B-s2,d0/ EN 13501-1</b>	
<b>Management system</b>		
for Quality	ISO 9001	
<b>Certifications, labels, guarantees, recycling capacity</b>		



The above technical data represent average values subject to a +/-5% tolerance.

The buyer of our products is fully responsible for their application and their transformation with regard to any possible third party. The buyer of our products is responsible for their implementation and installation according to the standards, workmanship and safety regulations in force in destination countries. For information on our contractual warranty, please refer to the relevant terms and conditions.

The values quoted above represent results of tests performed in compliance with common design practices and are provided for information only to enable customers to make the best use of our products. Our products are subject to changes based on technical advances and we reserve the right to modify their characteristics at any time. The buyer of our products is responsible for checking the validity of the above data.

### TOOLS AND SERVICES

- Maintenance manual and Life Cycle Assessment (LCA) available on request

#### → Contact

- Headquarters:  
+ 33 (0)4 74 97 41 33
- Your local representative:  
[www.sergeferrari.com](http://www.sergeferrari.com)

#### → TEXYLOOP®

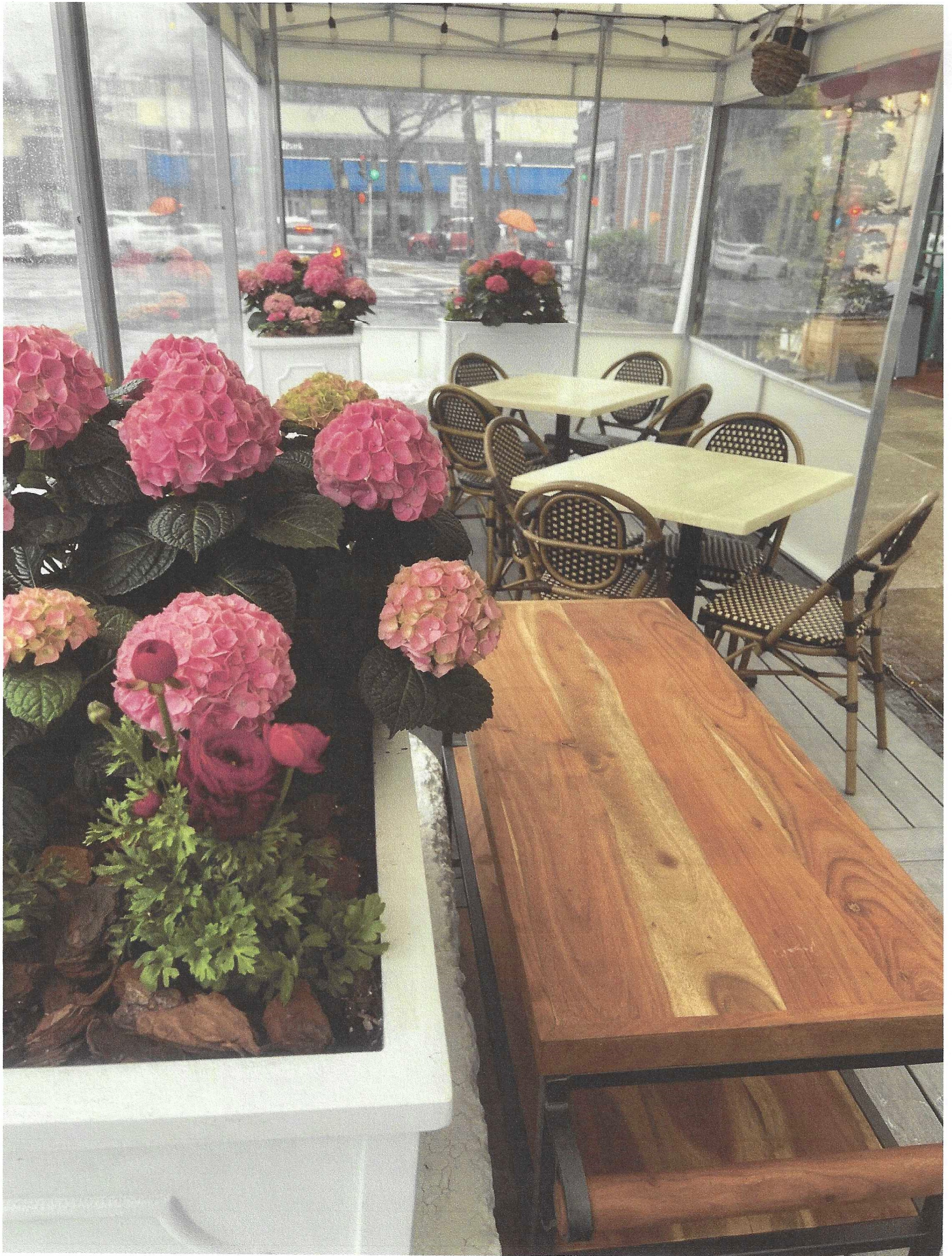
- The Serge Ferrari operational recycling chain
- Secondary raw materials of high intrinsic value compatible with multiple processes
- A quantified response to combat depletion of natural resources

[www.texyloop.com](http://www.texyloop.com)

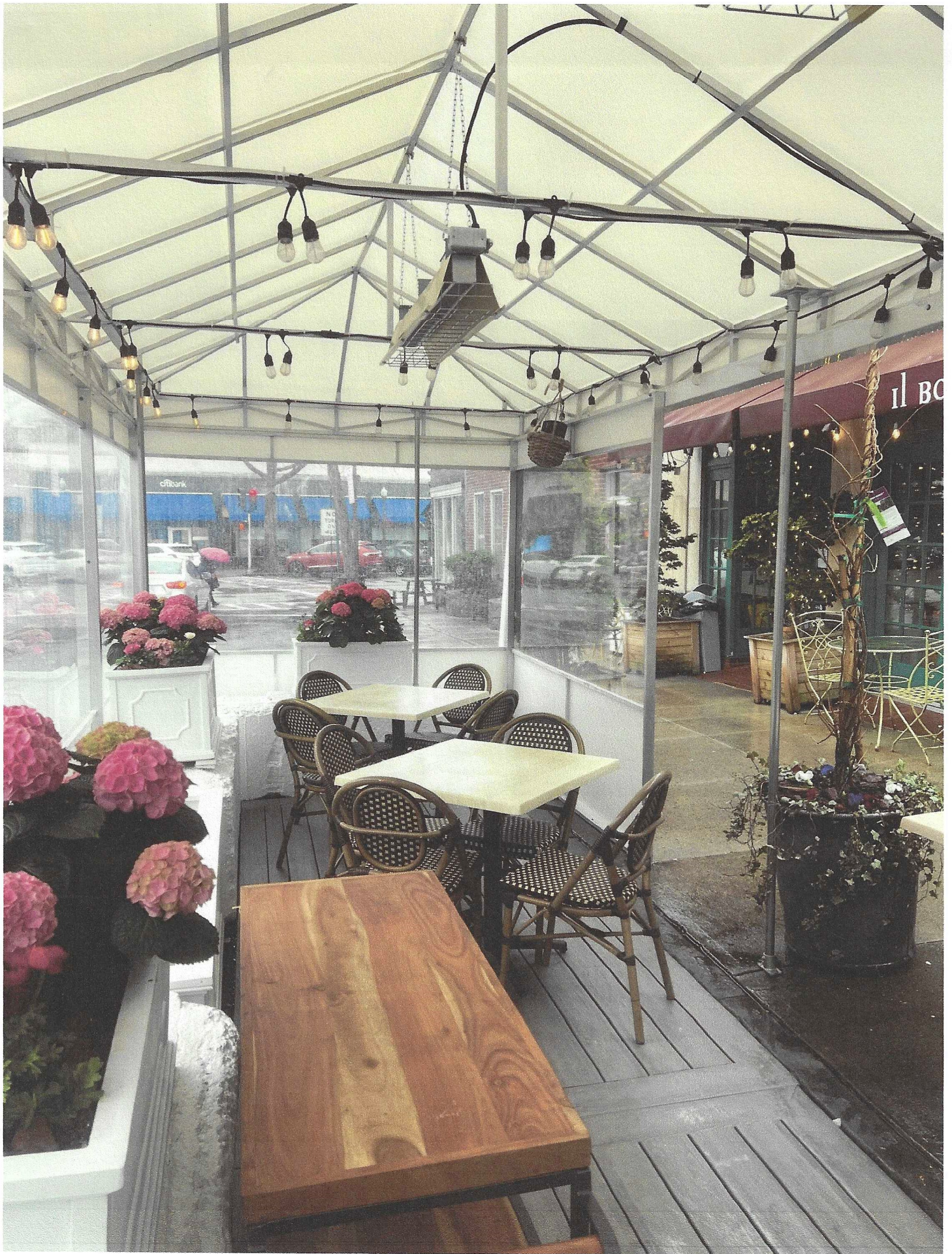
[www.sergeferrari.com](http://www.sergeferrari.com)

**Serge Ferrari**











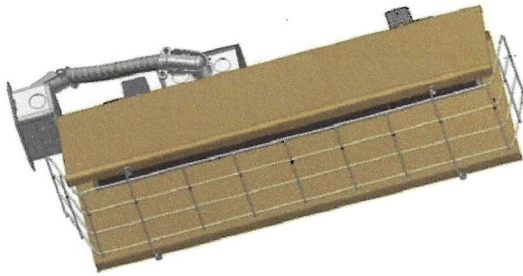


# FSS-Series

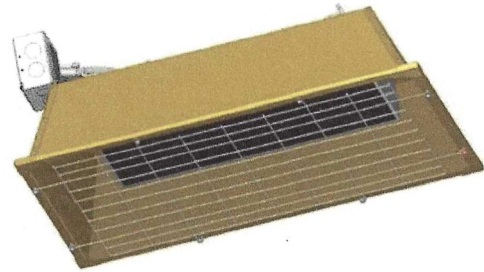
## Heavy-Duty Flat panel Emitter

### Electric Overhead Infrared Heaters

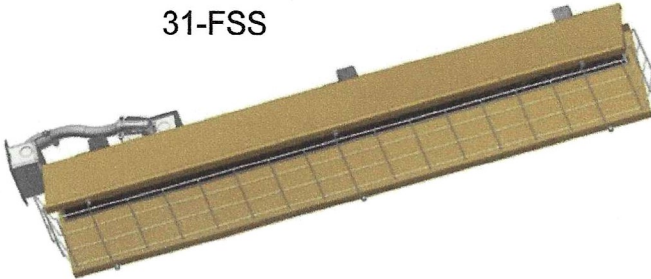
14-FSS



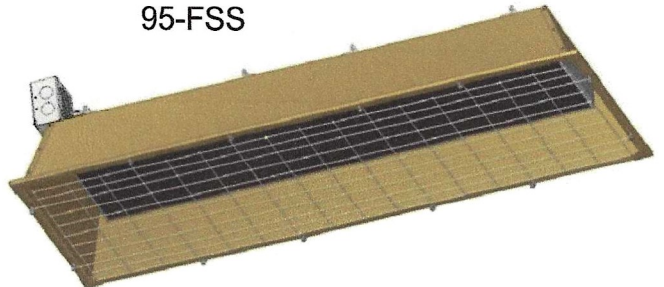
43-FSS



31-FSS



95-FSS



### ⚠ WARNING

#### IMPORTANT SAFETY INFORMATION INSIDE

- Serious injury or death possible
- Read, understand and follow all safety information and instructions in this manual before using or servicing this product.
- Retain these instructions for future use.



### ⚠ WARNING

**EXTREMELY HIGH TEMPERATURES ARE PRESENT, DURING OPERATION. MAINTAIN CLEARANCES FROM COMBUSTIBLES AS STATED IN MANUAL.**

REFER TO COMPLETE INDEX OF INFORMATION ON PAGE 2.



## IMPORTANT INSTRUCTIONS



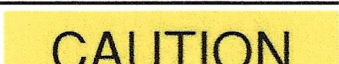
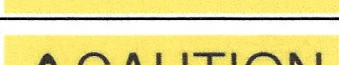
1. Read all instructions before installing or using the heater.
2. This heater is hot when in use. To avoid burns, do not let bare skin touch hot surfaces. Keep away from combustible materials at minimum, the following required distances. DO NOT install closer than 36 inches to a vertical surface or 24 inches to a ceiling. Heaters MUST BE SEPARATED by more than 36 inches and 72 inches from any combustible surface in direct radiation path (87 inches for FSS-19 Series).
3. Extreme caution is necessary when any heater is used by or near children or invalids and whenever the heater is left operating and unattended.
4. Do not operate any heater after it malfunctions. Disconnect power at service panel and have heater inspected by a reputable electrician before reusing.
5. Do not use outdoors.
6. To disconnect heater, turn controls to off, and turn off power to heater circuit at the main disconnect panel (or operate internal disconnect switch if provided).
7. Do not insert or allow foreign objects to enter any ventilation or exhaust opening as this may cause an electric shock or fire, or damage to the heater.
8. To prevent a possible fire, do not block air intakes or exhaust in any manner.
9. A heater has hot and arcing or sparking parts inside. Do not use it in areas where gasoline, paint or flammable vapors or liquids are used or stored.
10. Use this heater only as described in this manual. Any other use not recommended by the manufacturer may cause fire, electric shock, or injury to persons.
11. **SAVE THESE INSTRUCTIONS.**

## INDEX

General Description & Use	Page 4
Specifications	Page 4, 5, 6
Installation Planning	Pages 7, 8
Installation - Hanging Heaters	Pages 8, 9
Installation - Wiring	Pages 10, 12
Operation	Page 11
Maintenance	Page 11

**ATTENTION:**

The table to the right provides definitions of the signal words that can be found throughout this manual. These signal words are used to express the severity of the hazard at hand. The signal words are generally used in conjunction with safety symbols that correspond to the text for that particular hazard. As you read this manual, refer back to this table when you are unsure of the signal word definition.

SIGNAL WORD DEFINITIONS	
 <b>DANGER</b>	DANGER indicates an imminently hazardous situation which, if not avoided, <b>will</b> result in death or serious injury
 <b>WARNING</b>	WARNING indicates an imminently hazardous situation which, if not avoided, <b>could</b> result in death or serious injury
 <b>CAUTION</b>	CAUTION indicates an imminently hazardous situation which, if not avoided, <b>may</b> result in minor or moderate injury
 <b>CAUTION</b>	CAUTION used without the safety alert symbol indicates a potentially hazardous situation which, if not avoided, <b>may</b> result in property damage.
As defined in ANSI Z535-4-2002	

**THANK YOU!!**

Thank you very much for selecting Fostoria's overhead electric infrared heating equipment for your comfort heating needs. These products were engineered with the most reliable components and materials available and are equipped with features to assure ease of installation and maintenance.




The warmth you will now enjoy when using this heating equipment is created by a heat source; a flat panel emitter; that emits infrared energy in the form of heat, like the sun. This is an economical way to heat because it heats people and objects, not the air, so you don't need to heat a large area to feel warm.

**CHECKING YOUR SHIPMENT**

- Upon receipt of your shipment, check all cartons for visible damage.
- Claims for damaged material or shortages that were not evident upon receipt of shipment must be reported to carrier and TPI Corporation's customer service (800-251-0382) immediately.
- Any accessory items ordered for the heater will be shipped in separate cartons.



## GENERAL DESCRIPTION & USE

  	<b>⚠ WARNING</b>	<p>The Fostoria FSS-Series heaters provide safe, efficient electric infrared heat for total area heating or spot heating applications for warehouses, steel mills, machine shops and many other industrial applications. They are ideal for use in high vibration environments. Using the “L” brackets on the top of the housing these overhead heaters can be hung by chain or rigidly mounted. They operate cleanly, emitting no fumes or odors.</p> <p>Applications where combustible materials and/or personnel will be located near these heaters must adhere to the minimum clearance information below</p> <p style="text-align: center;"><b><u>REQUIRED CLEARANCES</u></b></p> <p><b><u>DO NOT</u></b> install closer than 36 inches to a vertical surface or 24 inches to a ceiling. Heaters <b><u>MUST BE SEPARATED</u></b> by more than 36 inches and 72 inches from any combustible surface in direct radiation path (87 inches for FSS-95 Series).</p>
	EXPLOSION HAZARD	
	FIRE HAZARD	
BURN HAZARD		
<ul style="list-style-type: none"><li>• Serious injury or death may occur</li><li>• Not for residential use.</li><li>• Do not use outdoors.</li><li>• Use for comfort heating only</li><li>• Do not use locations containing hazardous or explosive atmospheres</li></ul>		

## SPECIFICATIONS

- ETL listed for suspended, high-bay indoor applications (see table on next page)
- High-watt-density radiant heat with 60 degree heat pattern.
- Gold-anodized aluminum housing for good reflectivity and corrosion resistance
- “L-brackets included for chain suspension or rigid-mounting.
- Designed for direct-wire, single or three-phase configurations (see table next page).



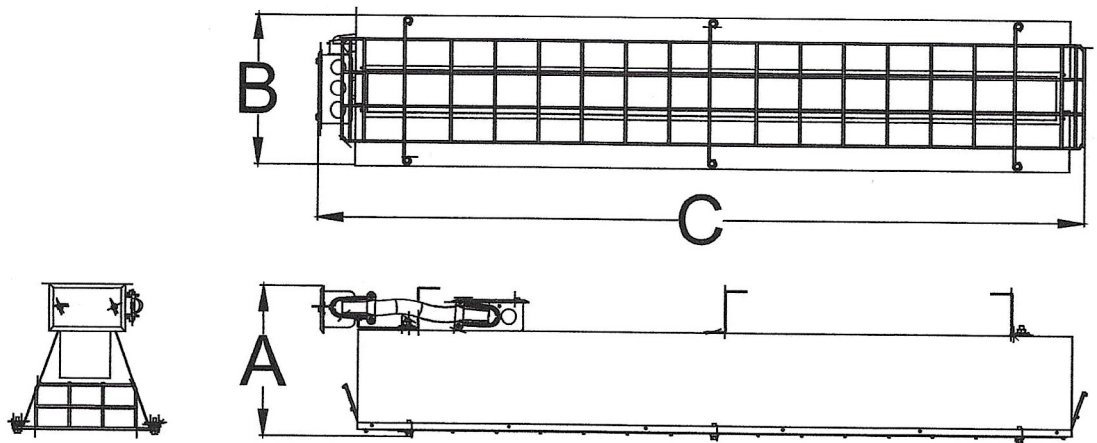
## SPECIFICATIONS (con't.)

Heater Models	Voltage And Phase	Amps 1ph.	Amps 3ph.	Number Of Elements	Watts	Btu's/Hr.	ETL listed	cETLus certified
E14-FSS-1	120; 1ph	12.1	N/A	1	1450	4947	Yes	Yes
F14-FSS-1	208; 1ph	6.97	N/A				Yes	Yes
H14-FSS-1	240; 1ph	6.04	N/A				Yes	Yes
G14-FSS-1	277; 1ph	5.23	N/A				Yes	Yes
P14-FSS-1	480; 1ph	3.02	N/A				Yes	Yes
U14-FSS-1	600; 1ph	2.52	N/A				Yes	Yes
F31-FSS-1	120; 1ph	15.14	N/A	1	3150	10,748	Yes	Yes
H31-FSS-1	240; 1ph	13.13	N/A				Yes	Yes
G31-FSS-1	277; 1ph	11.37	N/A				Yes	Yes
P31-FSS-1	480; 1ph	6.56	N/A				Yes	Yes
U31-FSS-1	600; 1ph	5.48	N/A				Yes	Yes
F43-FSS-3	208; 1 or 3ph	20.67	11.94	1	4300	14,672	Yes	Yes
H31-FSS-3	240; 1 or 3ph	17.91	10.36				Yes	Yes
G31-FSS-1	277; 1ph	15.52	N/A				Yes	Yes
P43-FSS-3	480; 1 or 3ph	8.96	5.18				Yes	Yes
U43-FSS-3	600; 1 or 3ph	7.48	4.32				Yes	Yes
F95-FSS-3	208; 3ph	N/A	26.39	1	9500	32,414	Yes	Yes
H95-FSS-3	240; 3ph	N/A	22.89				Yes	Yes
G95-FSS-1	277; 1ph	34.3	N/A				Yes	Yes
P95-FSS-3	480; 3ph	N/A	11.44				Yes	Yes
U95-FSS-3	600; 3ph	N/A	9.54				Yes	Yes

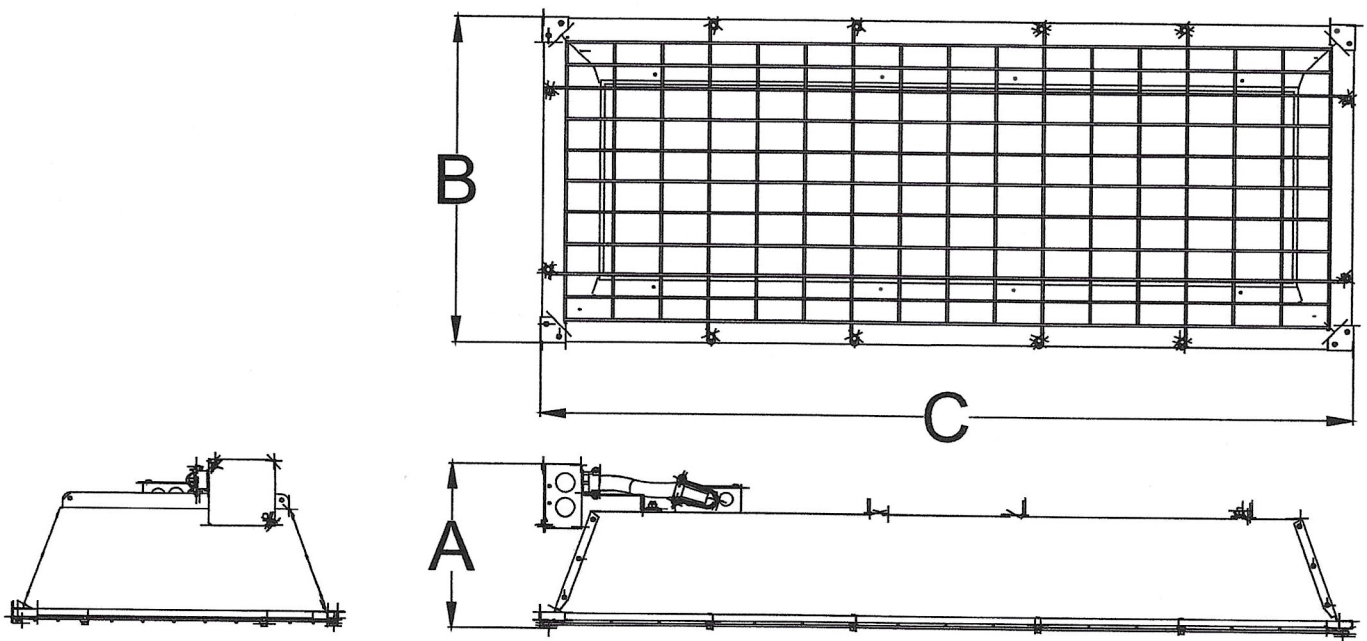


## SPECIFICATIONS (con't.)

### 14-FSS, 31-FSS



### 43-FSS, 95-FSS



Model Series	Dimension A (inches)	Dimension B (inches)	Dimension C (inches)	Weight (lbs.)
14-FSS	8-1/2	9	26	7
31-FSS	8-1/2	9	46	13
43-FSS	9-3/4	20	29	18
95-FSS	7-3/4	20	49	31



## INSTALLATION PLANNING

Fostoria's flat panel emitter heaters are equipped with heating elements that are manufactured using materials with exceptional mechanical and thermal performance and are built with precise process control to provide rugged and reliable infrared performance in challenging environments. It is our understanding that these precision characteristics can change with time, specifically in environments with high humidity or where mechanical damage can occur, causing the internal electrical insulation to weaken.


### Installer Qualifications

The installation and wiring of Fostoria MR heaters must be performed by a licensed electrician.

### Installer Responsibility

The National Electric Code (NEC) and local codes and ordinances together with specifications provided by Fostoria comprise the information needed for proper installation.

The installer must furnish all materials that have not been purchased from Fostoria or its representatives. It is the installer's responsibility that the materials and methods of installation result in a job that is workmanlike and compliant with all applicable codes.

	<b>⚠ WARNING</b>
	<p style="text-align: center; color: #0056b3;">FIRE HAZARD</p> <ul style="list-style-type: none"><li>• Serious injury or death may occur.</li><li>• Heater circuit load calculations and circuit design must be done by a licensed electrician or engineer.</li></ul>

### Preparations For Hanging Heaters

- Hardware to suspend these heaters from overhead supports (chain, "S"-hooks etc.) is not included with the product. Make certain that the hardware to be used is capable of supporting at least twice the total weight of the heater's in question. Refer to the specifications section of this manual for product weights.
- Identify and use installation locations that are strictly compliant with the clearance-to-combustibles requirements in the installation section of this manual.
- Mounting height is an important consideration to assure satisfaction with the heating performance of infrared heaters. Fostoria has many years of practical experience in the successful application of infrared technology. For that reason, recommended mounting heights have been included in the installation section of this manual. Please refer to this data and select installation points where these recommendations can be followed.



## INSTALLATION PLANNING (CON'T.)

### Supply Wire Size Recommendations



The table at the right is provided to assist the licensed electrician in sizing the electric supply wires required to deliver power to each individual heater. All branch circuit supply wiring must be copper, rated 90o C minimum and comply with all local codes and the NEC.

All recommended wire sizes assume a 50ft. maximum wire length.

Heater Model	kW	Volts	Amps		Recommended AWG Wire Size	
			3ph	1ph	3ph	1ph
E14-FSS-1	1.45	120	N/A	12.08	N/A	12
F14-FSS-1	1.45	208	N/A	6.97	N/A	12
H14-FSS-1	1.45	240	N/A	6.04	N/A	12
G14-FSS-1	1.45	277	N/A	5.23	N/A	12
P14-FSS-1	1.45	480	N/A	3.02	N/A	12
U14-FSS-1	1.45	600	N/A	2.52	N/A	12
F31-FSS-1	3.15	208	N/A	15.14	N/A	12
H31-FSS-1	3.15	240	N/A	13.13	N/A	12
G31-FSS-1	3.15	277	N/A	11.37	N/A	12
P31-FSS-1	3.15	480	N/A	6.56	N/A	12
U31-FSS-1	3.15	600	N/A	5.48	N/A	12
F43-FSS-3	4.3	208	11.9	20.67	12	10
H43-FSS-3	4.3	240	10.4	17.9	12	10
G43-FSS-1	4.3	277/480	5.2	15.5	12	12
P43-FSS-3	4.3	480	5.2	9.0	12	12
U43-FSS-3	4.3	600	4.3	7.5	12	12
F95-FSS-3	9.5	208	26.4	45.7	8	8
H95-FSS-3	9.5	240	22.9	39.6	10	8
G95-FSS-1	9.5	277/480	11.4	34.3	12	8
P95-FSS-3	9.5	480	11.4	19.8	12	10
U95-FSS-3	9.5	600	9.5	16.5	12	10

## INSTALLATION - HANGING HEATERS

⚠ **WARNING**

FIRE HAZARD

BURN HAZARD

- Install heaters to comply with REQUIRED CLEARANCES listed above at right.
- Do not mount heaters vertically.

### REQUIRED CLEARANCES

DO NOT install heaters closer than 36 inches to a vertical surface or 24 inches to a ceiling. Heaters **MUST BE SEPARATED** by more than 36 inches and 72 inches from any combustible surface in direct radiation path (87 inches for FSS-95 Series).

### HEATER HANGING ALTERNATIVES

One method of hanging the heaters (shown below) is with hardware chain and “S” hooks. The chain and “S” hooks must be either 14 or 16 gauge for all models. The heaters also can be mounted “fixed” with angle iron, metal rods or metal straps. Whatever means is used to mount the heaters, the terminal box must be **EVEN WITH** or **LOWER THAN** the horizontal plane of the heater housing.



## INSTALLATION - WIRING

### **WARNING**

#### ELECTRICAL SHOCK HAZARD



- Serious injury or death may occur.
- Disconnect heater and lock out from electrical supply before installing or servicing.
- Always securely connect green wire on heater to bonding (green) wire from electrical supply.

### **FOR ALL HEATERS**

Wiring procedures and connections shall be in accordance with the national and local authority having jurisdiction. The FSS series heaters do not have any on board controls and therefore must be used in conjunction with an applicable control center or be wired to a listed, properly rated safety switch for on/off control.

Always disconnect the power at the circuit breaker or disconnect switch before installing electric power to the heater. If the breaker or disconnect switch cannot be seen from where you will be working, lock it in the open position and tag it to prevent unexpected application of power. Failure to do so could result in fatal electric shock. Do not depend on a thermostat or other switch as the sole means of turning off power to the heater. When bringing supply wiring to the heater always route it away from the area directly above the heater and away from the sides of the heater where temperatures may be dangerously high.

### **WIRING OF THE FSS SERIES HEATERS:**


1. The FSS-14 and FSS-31 models are available in single phase only. All FSS-43 and FSS-95 models (except the FSS-4327-1) and FSS-9527-1) can be wired for single phase or three phase applications. See wiring diagrams on page 10.
2. Remove the cover from the terminal box.
3. Connect the lead wires to the 90°C rated supply wiring routed into the splice box with wire nuts or other safe mechanical means. Black and white supply leads can be connected to either element lead wire. Be sure green lead from supply and green (bonding) lead from the terminal box are connected.
4. Reinstall splice box cover.
5. Apply power to circuit.

“Bonding is the intentional electrical connection of all non-current carrying metal parts to the equipment grounding (green) conductor of the heater and then terminating this green conductor to the green conductor of the power supply to form a low-impedance path back to the power supply so that safety devices (circuit breakers, fuses) can quickly remove dangerous touch voltage from these parts when a fault occurs.

**Always securely connect the green conductor from the power supply to the green conductor of the heater.**



## OPERATION

	<b>⚠ WARNING</b>
	<b>BURN HAZARD</b> <ul style="list-style-type: none"><li>• Serious injury or death may occur.</li><li>• Allow heater to fully cool after power is removed (may take minutes) before touching or working on it.</li></ul>

When power is provided to these heaters the heater elements will take several minutes to achieve full infrared output that can be confirmed by an orange to dull red glow on the element surface. The element under this condition is operating between 1,500 and 1,600° F emitting medium wavelength (approx. 3 microns or millionths of a meter) infrared energy. This energy, that can also be considered “radiation” is not harmful, yet is very effective at heating objects and surfaces that are within the line-of-sight of the elements and the heater’s reflective surfaces.

When power is provided or removed from these heaters, you may hear unfamiliar sounds that are caused by the expansion and contraction of metal components in the heater. This is normal.

## MAINTENANCE

### Pre-Season Maintenance and Annual Inspection

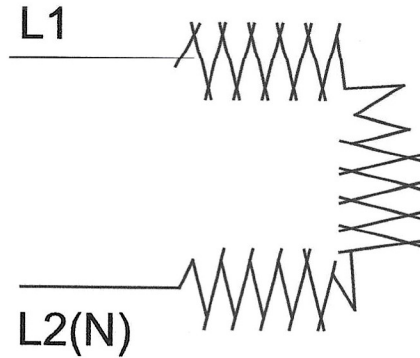
To ensure your safety and years of trouble-free operation from the heaters, periodic service and inspections must be done by a trained maintenance person or licensed electrician.

To obtain maximum performance from your heater(s) each year, we recommend the following be performed at the start of the heating season:

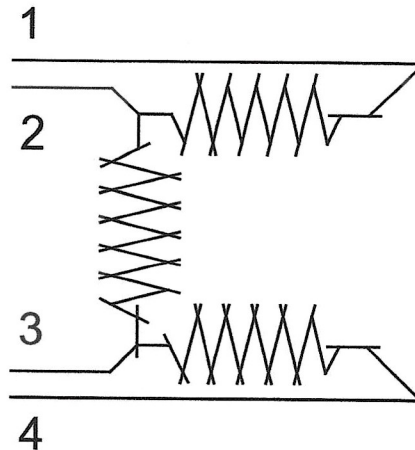
1. Disconnect power to heater at main panel. Be sure that heating elements have cooled down.
2. Clean housing surfaces with a damp cloth.
3. Blow or dust off the element.
4. Repair or replace damaged power cables.
5. **DO NOT hose-down these heaters.**



WIRING SCHEMATIC  
FOR 14-FSS, 31-FSS  
43-FSS (277V)  
AND 95-FSS (277V) MODELS



FOR ALL OTHER MODELS



FOR 3PH OPERATION

L1-1 & 4, L2-2, L3-3.

FOR 1PH OPERATION

L1-1 & 3, L2(N)-2 & 4.



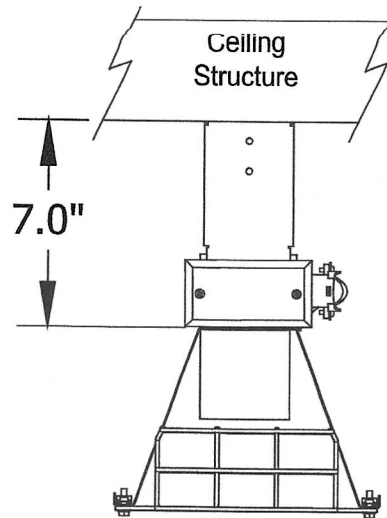
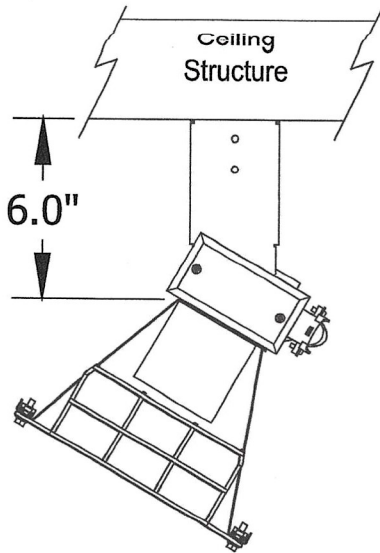
**INSTALLATION INSTRUCTIONS  
FSS-14/31CMK CEILING MOUNT KIT  
FOR FSS-14 AND FSS-31 SERIES HEATERS**

**INSTALLATION  
INSTRUCTIONS**

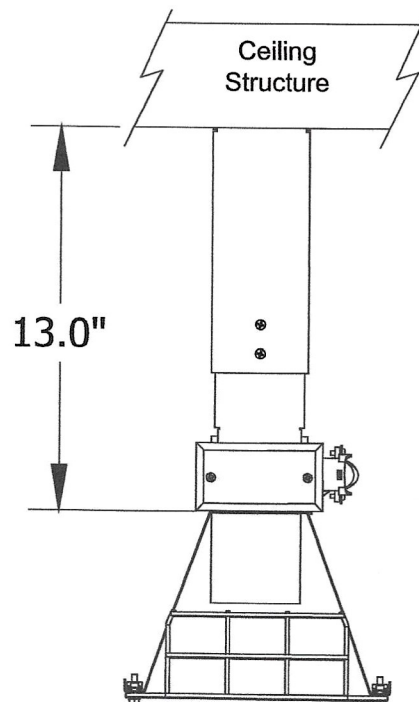
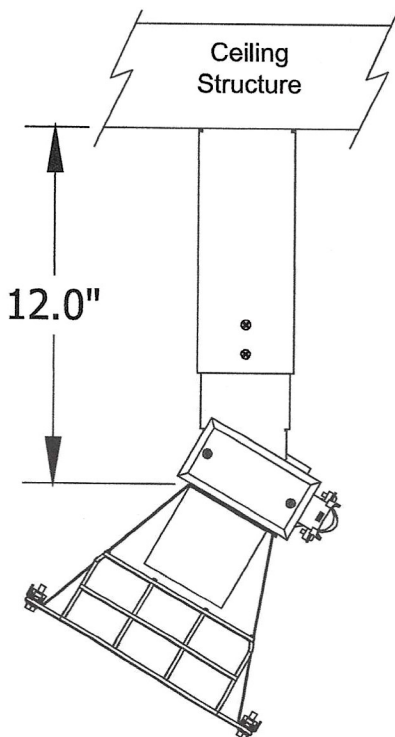


Quality Since 1917

**WITH 6 INCH MOUNTING BRACKET**



**WITH EXTENDED MOUNTING BRACKET**



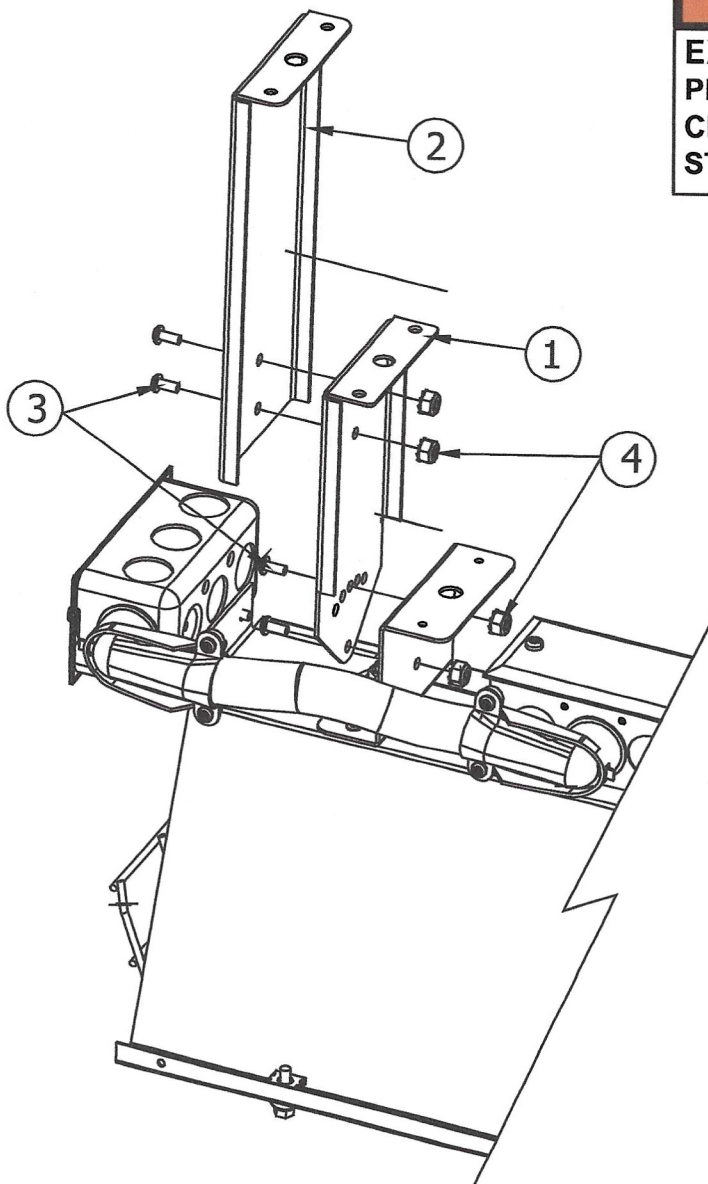


## DESCRIPTION

The mounting bracket kit is an accessory that adds versatility to the mounting capability of the FSS series infrared heaters. This mounting bracket kit provides for the minimum 6 inch mounting clearance for ceiling mount and also includes an extended mounting bracket for 12 inches of clearance. The optional mounting bracket can be used or any other sufficient means that provides the minimum mounting clearances as stated in the heater manual.

## ASSEMBLY

All hardware necessary for mounting the optional brackets to the heater is provided in the kit. The bracket provides for angular rotation up to 30° for direction of radiation. Hardware necessary for mounting to structure is provided by installer. Mounting hardware must be suitable for the surface the heater is mounted to. The surface and hardware must be capable of supporting the total weight of the heater and brackets.

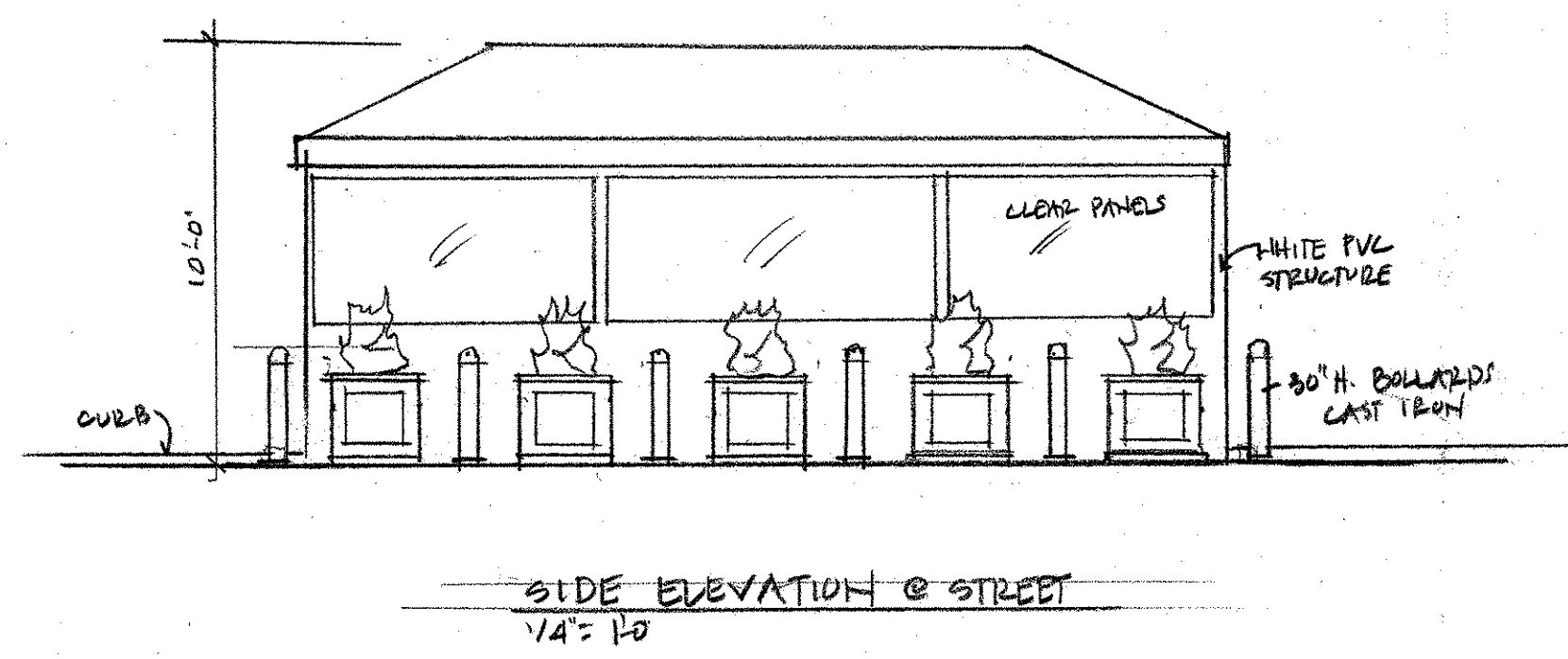
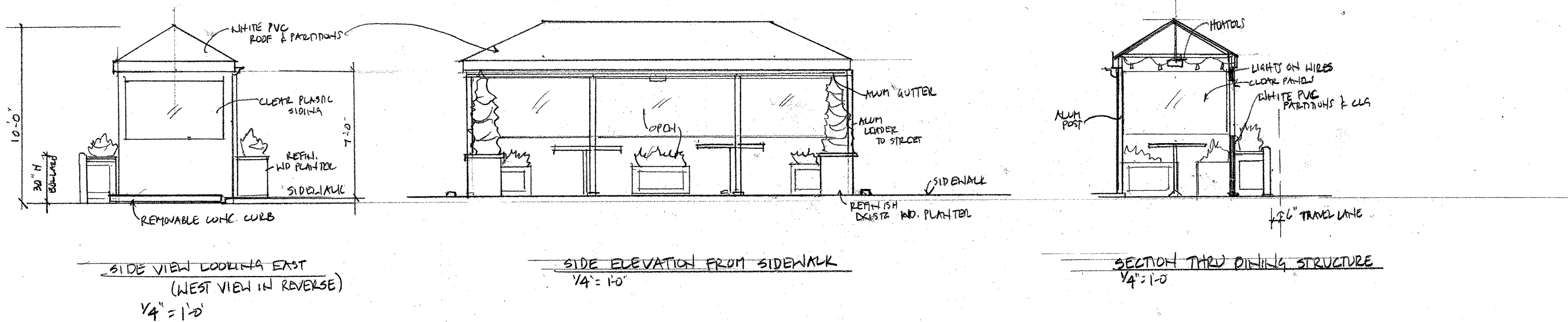


## **!** WARNING

**EXTREMELY HIGH TEMPERATURES ARE PRESENT, DURING OPERATION. MAINTAIN CLEARANCES FROM COMBUSTIBLES AS STATED IN THE HEATER MANUAL.**

ITEM	DESCRIPTION
1	6" ADJUSTABLE MOUNTING BRACKET
2	MOUNTING BRACKET EXTENSION
3	10-32 X 3/8" SCREW
4	10-32 KEPSNUT





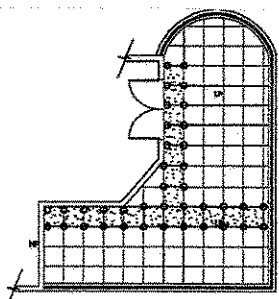
**Maintenance Recommendations (NO DECKING)**

Routine maintenance of your wood tile deck system will enhance the beauty, reduce major repairs, and prolong the life of your deck. Below is a list of maintenance guidelines that should be performed on a regular basis:

- Check for wood tiles that rock. If you notice wood tiles rocking back and forth while walking on the deck, simply lift the wood tile and shim one or more corners until the paver is level on all four corners. Failure to do so can cause a tripping hazard.
- To remove a wood tile, use a screwdriver to loosen the screw, and rotate the washer to release the wood tile.
- Depending on substrate materials, some settling and/or deflection can occur. Remove the wood tile, and adjust the pedestal until a level height is achieved. You may need to do this to more than one pedestal to level out an area.
- Clean drains and scuppers on a regular basis. Water should completely drain off the roof deck within 48 hours after rainfall, under ambient drying conditions. Standing or pooling water can be detrimental to some waterproofing systems.
- Periodically check the spacer tabs between wood tiles, and immediately replace broken spacer tabs to limit unsafe deck movement.
- Make sure the edge restraint remains intact and structurally sound. There should not be room around the perimeter of the deck in excess of 3/16" (4.5 mm) width, which would allow for lateral movement of the wood tiles and create an unsafe condition.
- It is highly recommended to retain extra wood tiles from the original installation in a convenient location for future repairs or replacements.

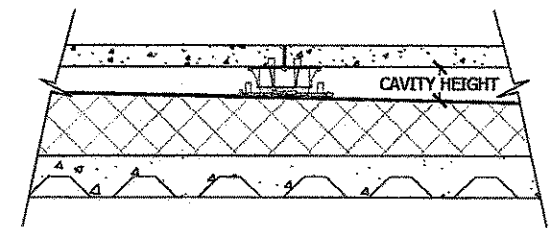
**"T" Method Installation FOR W/D DECKING & PEDESTALS**

1. Determine cavity heights at all thresholds, drains, and high points.
2. Deduct thickness of decking material.
3. Mark top of pedestal elevation around deck with chalk line or laser level.
4. Plan paver/pedestal layout pattern in advance.
5. Install "T" shaped portion of deck starting from threshold or high point.
6. Adjust to correct height and level.
7. Install on both sides of the "T".



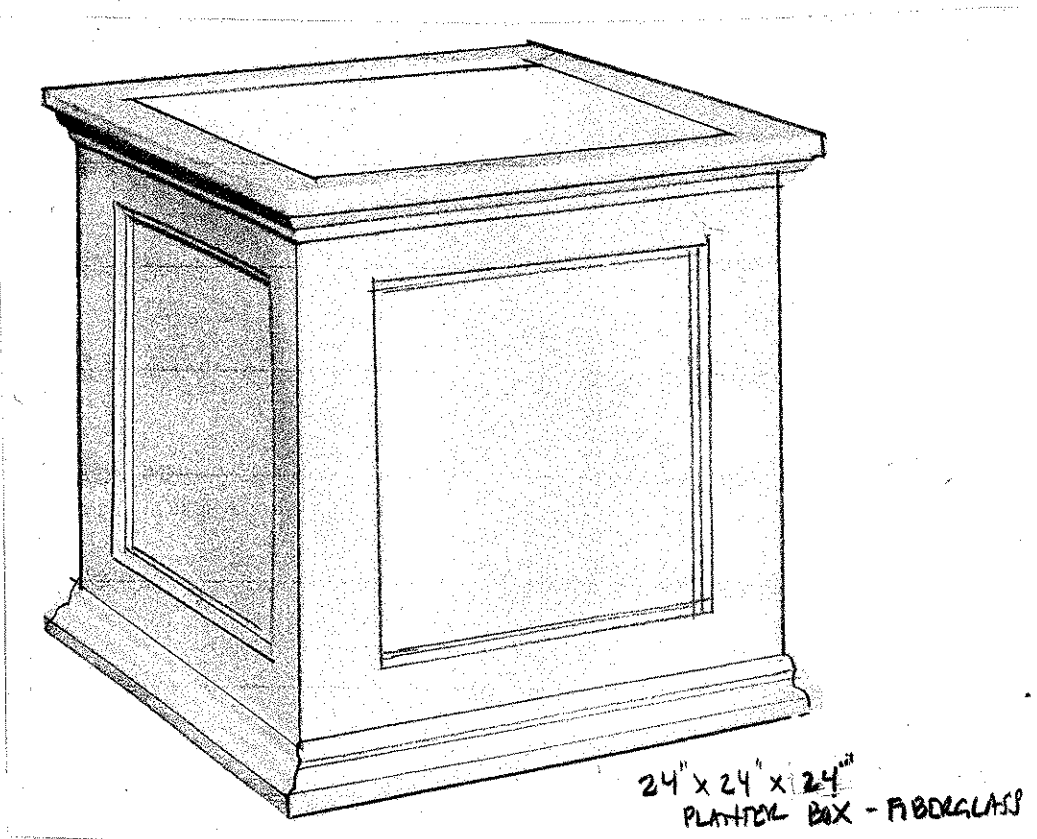
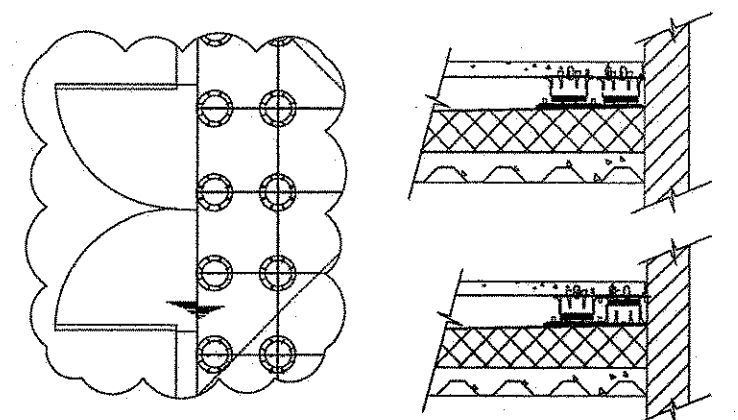
**Determining Cavity Height**

- The cavity height is the space between the top of the roofing membrane and the bottom of the decking material.
- Use a laser level or chalk line to assist.
- Refer to the detachable measuring device printed on the box.



**(A1) (a) Threshold and (b) Perimeter Placement**

- Use extra pedestals under small cut pieces for additional support.
- Adhere small pavers to top of pedestal with construction adhesive.
- Remove tabs as necessary for perimeter pedestals.
- Turn pedestals upside down or trim pedestal bases as necessary to fit around the perimeter.
- Decking pavers must not be spaced more than 3/16" (4.5 mm) from the perimeter containment.
- Adhere tabs into place with construction adhesive to maintain spacing between pavers when normal tab placement is not possible.



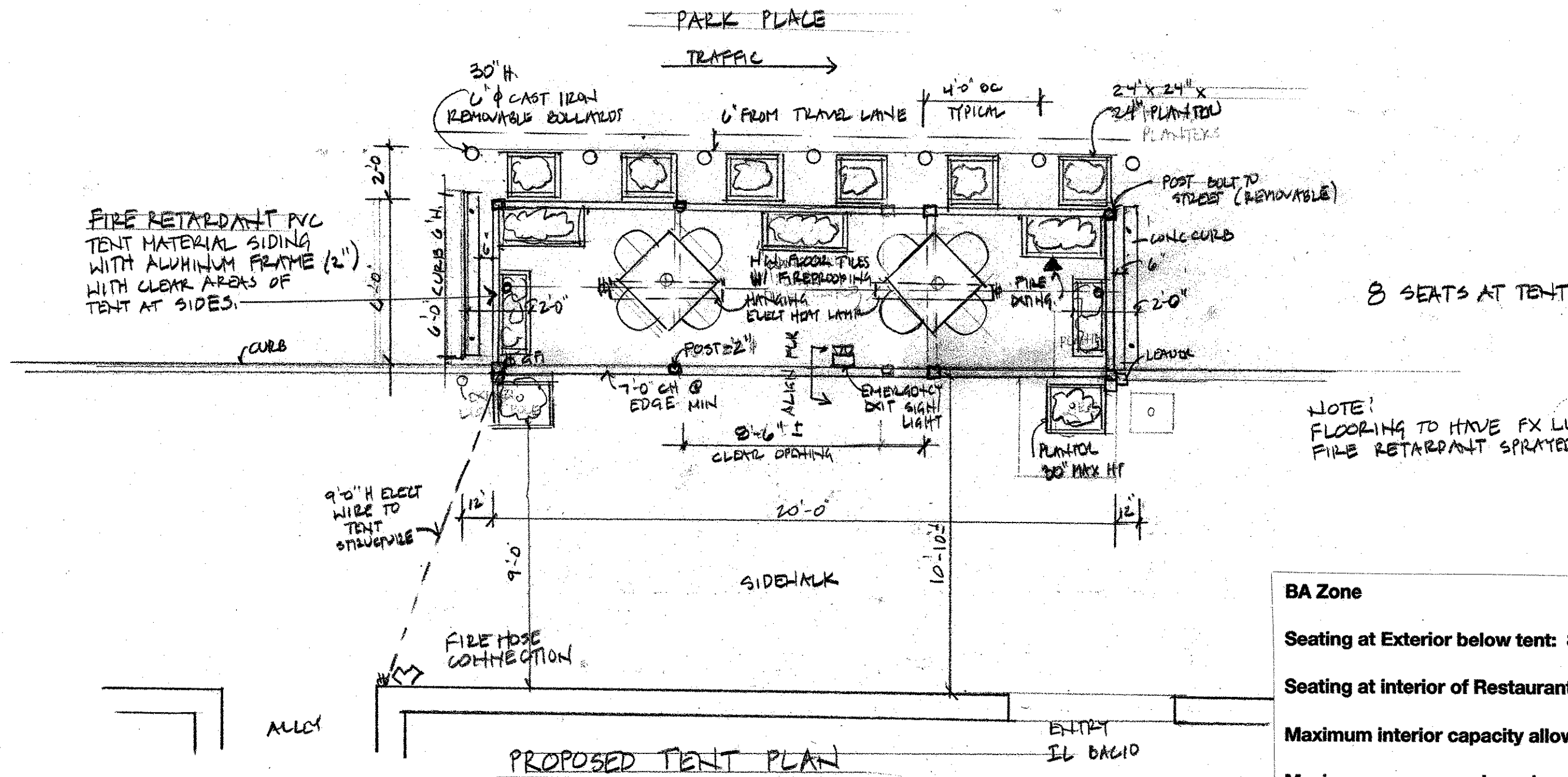
**Marrone Architects**  
 21 Northway  
 Bronxville, NY 10708  
 (914) 779-5538  
 mgmaia5@aol.com

Project:  
 IL D'ACIO TRATTORIA  
 OUTDOOR DINING  
 1 PARK PLACE  
 BRONXVILLE, NY

3.25.24

Drawing#  
 2





PROPOSED TENT PLAN  
1/4" = 1'-0"

**BA Zone**

Seating at Exterior below tent: 8 Seats

Seating at interior of Restaurant: 58 Seats

Maximum interior capacity allowed interior: 66 seats

Maximum occupancy based on Toilets/Urinals as per table 408.1 - 2020 NYS Building Code is 1/75 toilets/people : 3 Total toilets existing therefore meets code. (Required 1 toilet minimum).

**NOTE:** All finishes, furnishings and decorations are fire resistant at tent area.

**NOTE:** Tent space in street is over 1 parking space.

**NOTE:** No open flame devices allowed including candles, heaters or propane fueled devices.

**NOTE:** All flooring and floor covering and all tent materials to comply with code and meet Method #2 NFPA701.

**NOTE:** All tablecloths to be fire resistant.

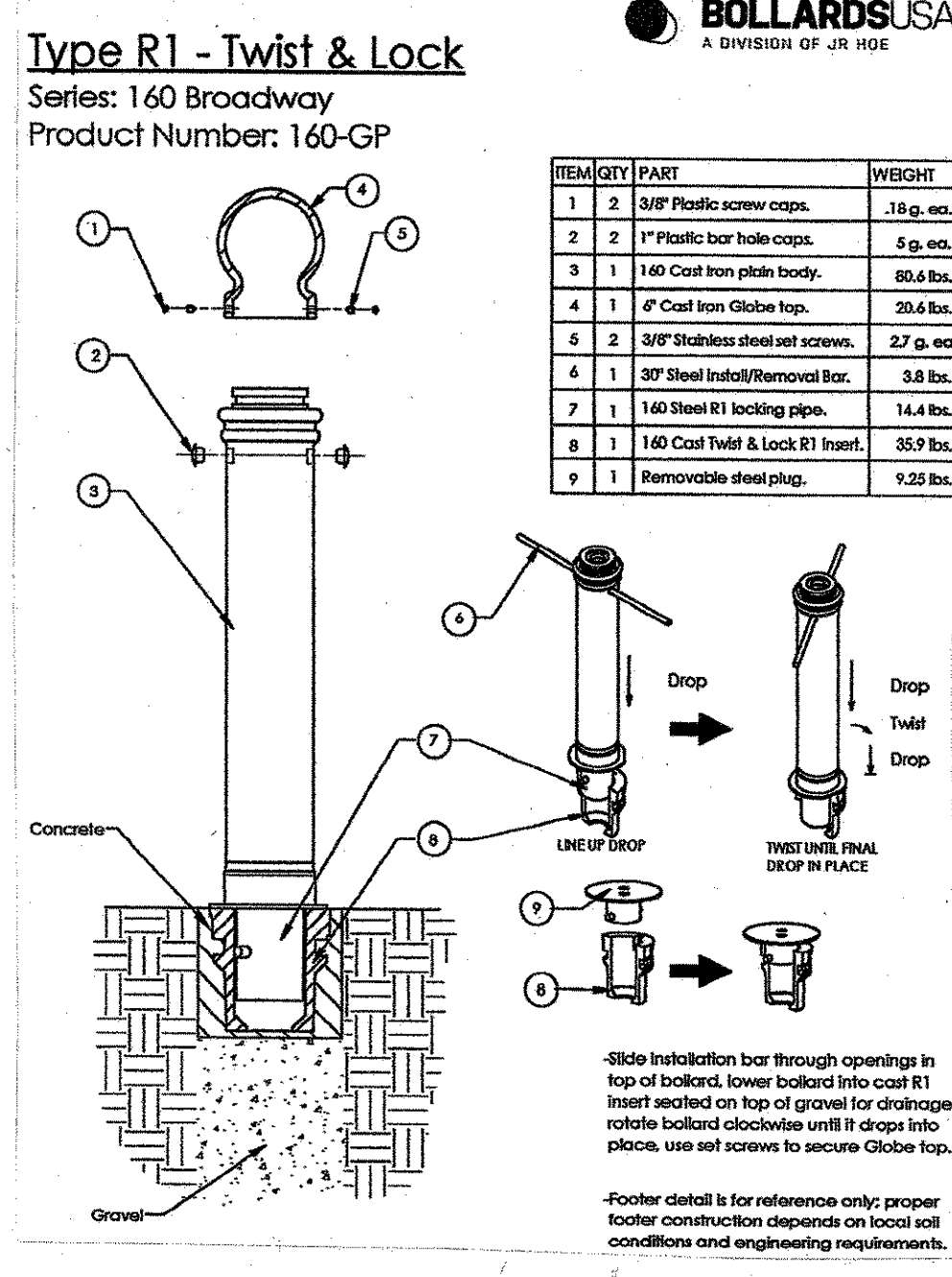
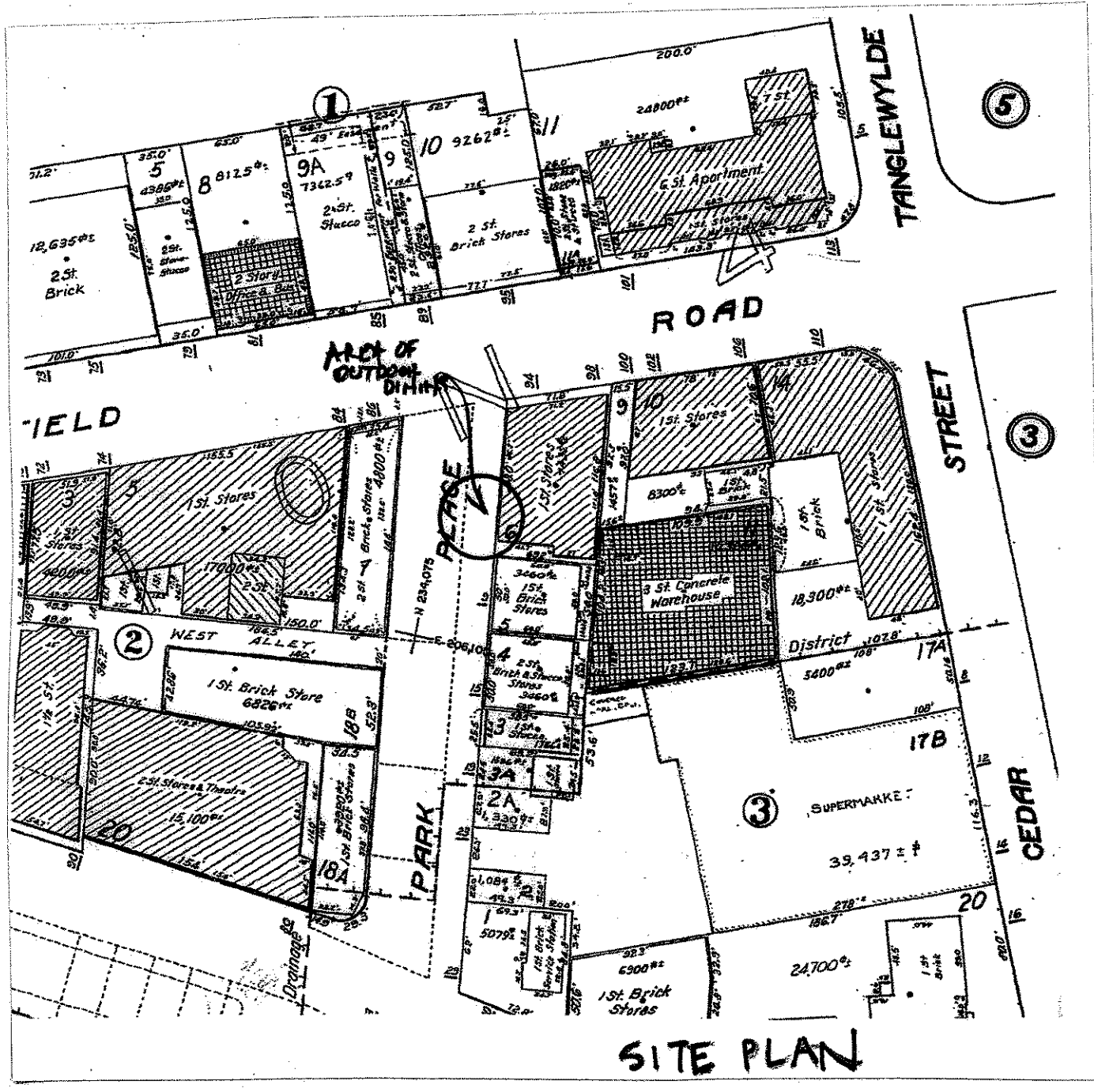
**NOTE:** No cooking or open flamed dishes allowed in tent.

**NOTE:** All freestanding elements to be weighted at the base

Flooring to be Bison Cumara Wood Tiles, 24" x 24" with Bison FS-1 Fastening kit and Versadjust adjustable pedestals - steel bracing system below wood flooring to level.

Reduce size of existing tent structure.

**Note:** Outdoor dining facility to be completely removable.



**Marrone Architects**  
21 Northway  
Bronxville, NY 10708  
(914) 779-5538  
mgmaia5@aol.com

Project:  
IL DACCIO TRATTORIA  
OUTDOOR DINING  
1 PARK PLACE  
BRONXVILLE, NY

3-25-24  
Drawing#