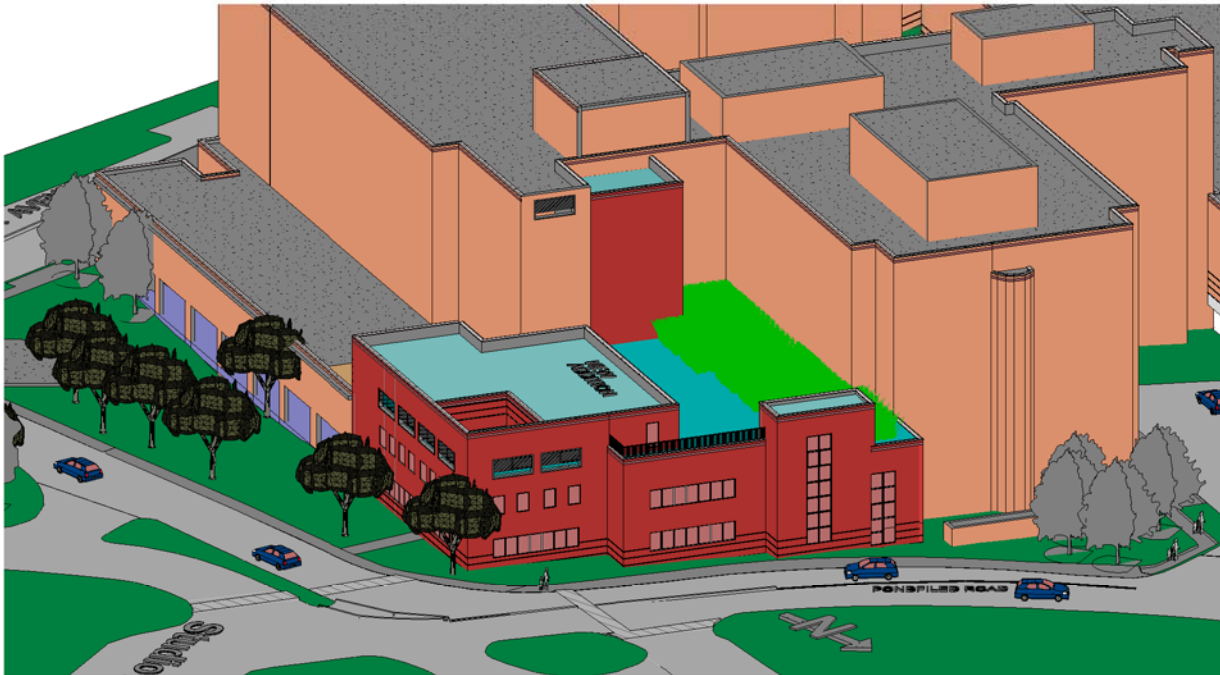


CANCER CENTER & OPERATING ROOM RELOCATION
LAWRENCE HOSPITAL CENTER
 BRONXVILLE, NY 10708



DRAWING LIST:

- A101 - Cover Sheet.**
- A102 - Material Deliveries Route Plan.**
- A103 - Foundations Phase - Logistics.**
- A104 - Superstructure Phase - Logistics.**
- A104A - Large Vehicles Deliveries.**
- A105 - Interiors Phase - Logistics.**
- A106 - Partial Staging Views.**
- A107 - Potential Parking - Map.**
- A108 - Potential Parking - Option A Arial.**



Lawrence Hospital

Cancer Center & Operating Room Relocation

No.	Description	Date

Cover Sheet

Project number	Project Number	A101
Date	12.01.11 Revisions	
Drawn by	M.Socolick	
Checked by	EVH	
		Scale As indicated