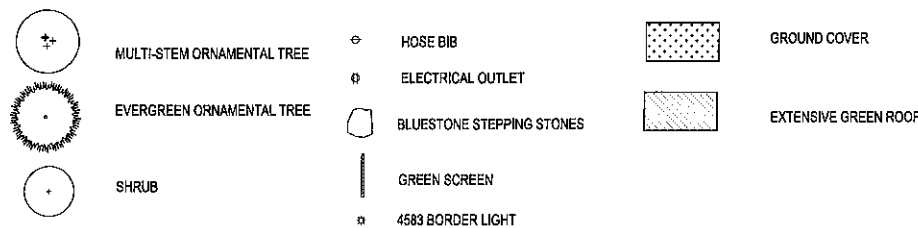


PLANTING SCHEDULE

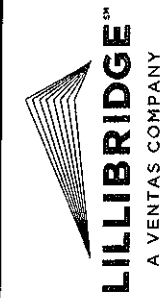
KEY	QTY	BOTANICAL NAME	COMMON NAME	GALPER	SPREAD	HEIGHT	BALL SIZE	CONTAINER SIZE	REMARKS
TREES									
AC	8	<i>Amelanchier canadensis</i>	SERVICEBERRY	-	6'-8'	24-36'	-	B + B	MULTI-STEMMED SPECIMEN
CH	6	<i>Chamaecyparis obtuse</i>	DWARF HINOKI CYPRESS	-	6'-8'	24-36'	-	B + B	MULTI-STEMMED SPECIMEN
SHRUBS									
AA	1	<i>Aronia arbutifolia</i>	RED CHOKEBERRY	-	24-36'	24-36'	-	3 GAL.	FULLY FORMED SPECIMENS
CA	10	<i>Clethra alnifolia</i>	SWEET PEPPERBUSH	-	24-36'	24-36'	-	5 GAL.	FULLY FORMED SPECIMENS
CD	20	<i>Cotoneaster dammeri 'coral'</i>	CORAL BEAUTY COTONEASTER	-	18-24'	24-36'	-	2 GAL.	FULLY FORMED SPECIMENS
CO	32	<i>Cotoneaster scicifolia</i>	WILLOW LEAFED COTONEASTER	-	18-24'	24-36'	-	2 GAL.	FULLY FORMED SPECIMENS
CS	4	<i>Cornus sericea 'stolonifera'</i>	RED-OSIER DOGWOOD	-	24-36'	24-36'	-	5 GAL.	FULLY FORMED SPECIMENS
CP	15	<i>Comptonia peregrina</i>	SWEETFERN	-	18-24'	18-24'	-	2 GAL.	FULLY FORMED SPECIMENS
DL	22	<i>Diervilla lonicera 'copper'</i>	COPPER BUSH-HONEYSUCKLE	-	24-36'	24-36'	-	3 GAL.	FULLY FORMED SPECIMENS
IG	16	<i>Ilex glabra</i>	HOLLY	-	24-36'	24-36'	-	3 GAL.	FULLY FORMED SPECIMENS
MP	15	<i>Myrica pensylvanica</i>	NORTHERN BAYBERRY	-	24-36'	24-36'	-	5 GAL.	FULLY FORMED SPECIMENS
VINES									
CV	16	<i>Clematis virginiana</i>	VIRGIN'S BOWER	-	24-36'	24-36'	-	1 GAL.	STAKED
LS	16	<i>Lonicera sempervirens</i>	TRUMPET HONEYSUCKLE	-	24-36'	24-36'	-	1 GAL.	STAKED
PQ	22	<i>Parthenocissus quinquefolia</i>	VIRGINIA CREEPER	-	24-36'	24-36'	-	1 GAL.	STAKED
GROUND COVER / PERENNIALS									
AQ	47	<i>Aquilegia canadensis</i>	COLUMBINE	-	12-18"	-	-	1 GAL.	FULLY FORMED SPECIMENS
AS	125	<i>Asarum canadense</i>	WILD GINGER	-	12-18"	-	-	1 GAL.	FULLY FORMED SPECIMENS
AT	50	<i>Asclepias tuberosa</i>	BUTTERFLYWEED	-	12-18"	-	-	1 GAL.	FULLY FORMED SPECIMENS
ASA	28	<i>Astilbe arendsi</i>	FALSE SPIREA	-	18-24"	-	-	1 GAL.	FULLY FORMED SPECIMENS
GO	100	<i>Galium odoratum</i>	SWEET WOODRUFF	-	12-18"	-	-	1 GAL.	FULLY FORMED SPECIMENS
HA	66	<i>Heuchera americana</i>	CORAL BELLS	-	12-18"	-	-	1 GAL.	FULLY FORMED SPECIMENS
HO	49	<i>Hosta species</i>	PLANTAIN LILY	-	18-24"	-	-	1 GAL.	FULLY FORMED SPECIMENS
NF	34	<i>Nepeta faassenii</i>	CATMINT	-	12-18"	-	-	1 GAL.	FULLY FORMED SPECIMENS
PQ1	100	<i>Parthenocissus quinquefolia</i>	VIRGINIA CREEPER	-	12-18"	-	-	1 GAL.	FULLY FORMED SPECIMENS
PS	129	<i>Phlox subulata</i>	MOSS-PINK	-	12-18"	-	-	1 GAL.	FULLY FORMED SPECIMENS
SA	120	<i>Sisyrinchium angustifolium</i>	BLUE-EYED GRASS	-	12-18"	-	-	1 GAL.	FULLY FORMED SPECIMENS
TC	80	<i>Tierella cordifolia</i>	FOAMFLOWER	-	12-18"	-	-	1 GAL.	FULLY FORMED SPECIMENS
VC	40	<i>Verbena canadensis</i>	ROSE VERBENA	-	12-18"	-	-	1 GAL.	FULLY FORMED SPECIMENS

LEGEND



GREEN ROOF AND GARDEN PLANTING PLAN
SCALE: 1/8" = 1'

NOTE
1. ALL PERENNIALS SHALL BE LAID OUT IN THE FIELD BY THE LANDSCAPE ARCHITECT PRIOR TO PLANTING



THIS DOCUMENT IS THE PROPERTY OF LHS FACILITIES DEVELOPMENT GROUP, INC. & SHALL NOT BE USED WITHOUT LHS FACILITIES DEVELOPMENT GROUP, INC.'S EXPRESS WRITTEN CONSENT

**LAWRENCE HOSPITAL CENTER
CANCER CENTER & OPERATING ROOM RELOCATION**
55 PALMER AVENUE
BRONXVILLE, NY 10708

FOR PLANNING BOARD REVIEW

REVISIONS	NO.	DATE	BY

PROJECT NO: 2008-09
DATE: 8-18-2011
DRAWN BY: CS

SHEET NO.
L-4