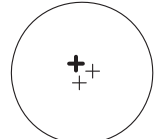

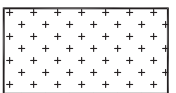
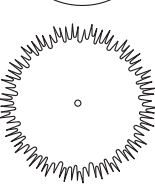

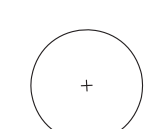

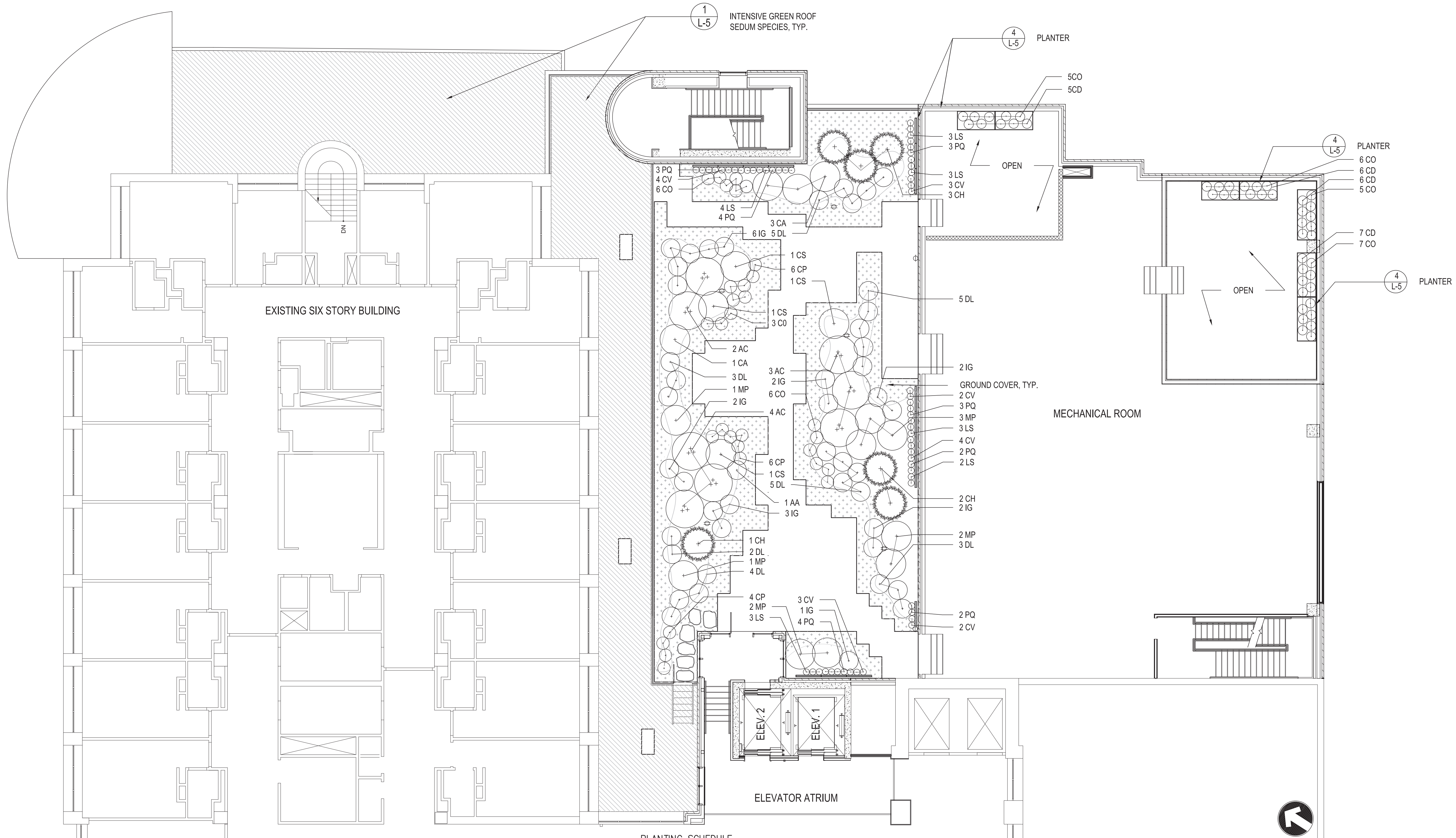


GREEN ROOF AND GARDEN PLANTING PLAN

SCALE : 1/8" = 1'

LEGEND

	MULTI-STEM ORNAMENTAL TREE		HOSE BIB		GROUND COVER
	EVERGREEN ORNAMENTAL TREE		ELECTRICAL OUTLET		EXTENSIVE GREEN ROOF
	SHRUB		BLUESTONE STEPPING STONES		
			GREEN SCREEN		



PLANTING SCHEDULE

KEY	QTY	BOTANICAL NAME	COMMON NAME	CALIPER	SPREAD	HEIGHT	BALL SIZE	CONTAINER SIZE	REMARKS
TREES									
AC	8	<i>Amelanchier canadensis</i>	SERVICEBERRY			6'-8"	-	B & B	MULTI-STEMMED SPECIMEN
CH	6	<i>Chamaecyparis obtusa</i>	DWARF HINOKI CYPRESS			6'-8"	-	B & B	MULTI-STEMMED SPECIMEN
SHRUBS									
AA	1	<i>Aronia arbutifolia</i>	RED CHOKEBERRY	-	24-36"	24-36"	-	3 GAL.	FULLY FORMED SPECIMENS
CA	4	<i>Clethra alnifolia</i>	SWEET PEPPERBUSH	-	24-36"	24-36"	-	5 GAL.	FULLY FORMED SPECIMENS
CD	22	<i>Cotoneaster dammeri</i> "coral"	CORAL BEAUTY COTONEASTER	-	18-24"	24-36"	-	2 GAL.	FULLY FORMED SPECIMENS
CO	38	<i>Cotoneaster salicifolia</i>	WILLOW LEAFED COTONEASTER	-	18-24"	24-36"	-	2 GAL.	FULLY FORMED SPECIMENS
CS	4	<i>Cornus sericea</i> 'stolinefera'	RED-OSIER DOGWOOD	-	24-36"	24-36"	-	5 GAL.	FULLY FORMED SPECIMENS
CP	15	<i>Comptonia peregrina</i>	SWEETFERN	-	18-24"	18-24"	-	2 GAL.	FULLY FORMED SPECIMENS
DL	22	<i>Diervilla lonicera</i> 'copper'	COPPER BUSH-HONEYSUCKLE	-	24-36"	24-36"	-	3 GAL.	FULLY FORMED SPECIMENS
IG	16	<i>Ilex glabra</i>	INKBERRY	-	24-36"	24-36"	-	3 GAL.	FULLY FORMED SPECIMENS
MP	9	<i>Myrica pensylvanica</i>	NORTHERN BAYBERRY	-	24-36"	24-36"	-	5 GAL.	FULLY FORMED SPECIMENS
VINES									
CV	18	<i>Clematis Virginiana</i>	VIRGIN'S BOWER	-	24-36"	24-36"	-	1 GAL.	STAKED
LS	18	<i>Lonicera Sempervirens</i>	TRUMPET HONEYSUCKLE	-	24-36"	24-36"	-	1 GAL.	STAKED
PQ	22	<i>Parthenocissus quinquefolia</i>	VIRGINIA CREEPER	-	24-36"	24-36"	-	1 GAL.	STAKED
GROUND COVER									
945		ASSORTED GROUND COVER PLANTS		-	12-18"	-	-	1 GAL.	FULLY FORMED SPECIMENS

NOTE
 1. ALL PERENNIALS SHALL BE LAID OUT IN THE FIELD BY THE LANDSCAPE ARCHITECT PRIOR TO PLANTING
 2. PLANT SPECIES MAY VARY FROM SCHEDULE DUE TO AVAILABILITY AT TIME OF PLANTING

THIS DOCUMENT IS THE PROPERTY OF LHS FACILITIES DEVELOPMENT GROUP INC. & SHALL NOT BE USED WITHOUT LHS FACILITIES DEVELOPMENT GROUP INC. EXPRESS WRITTEN CONSENT

**LAWRENCE HOSPITAL CENTER
 CANCER CENTER & OPERATING ROOM RELOCATION**
 55 PALMER AVENUE
 BRONXVILLE, NY 10708

REVISIONS	NO.	DATE	BY

PROJECT NO: 2009-09
 DATE: 3-15-2010
 DRAWN BY: CS

THIS DRAWING IS NOT INTENDED FOR BIDDING, REGULATORY APPROVAL, PERMIT, OR CONSTRUCTION PURPOSES.